



The newsletter for members of Clay Electric Cooperative, Inc.

Kilowatt

January 2024

**Amped up:
Salt Springs
gets upgraded**

It pays to vote, and it's never been easier

Voting is an important civic responsibility for us all, and each year, I call upon members of respective districts to exercise their voting rights in an election that determines their representative on Clay Electric's Board of Trustees.

All Clay Electric members, like yourself, who vote online or by absentee ballot, are entered into a prize drawing contest to win one of 43 bill credits. The grand prize is a \$4,800 bill credit, and the other prizes include: one \$2,500 bill credit, one \$2,000 bill credit, one \$1,800 bill credit, one \$700 bill credit, one \$400 bill credit and 37 bill credits of \$50.

This year, voting opens Jan. 29 for candidates in Districts 3, 5 and 7, and it's never been easier for our members to vote. Simply login to your MyClayElectric account, click "Vote Now" and follow the instructions. Absentee ballots can also be requested until March 1.

I'm grateful to our members of the respective districts who attended the trustee meetings earlier this month, where our incumbents were chosen as candidates without opposition.

Online voting is another advantage of being enrolled in MyClayElectric, which current users will have noticed recently got a facelift. The free electronic service allows you to do things like view your account balance, report a power outage or view the status of a current outage and view your energy usage.

MyClayElectric is available on clayelectric.com, or you can download the app via Google Play or the App Store.

We'll announce the results of the election on March 15 and during our Annual Meeting and gathering of members March 23 at Keystone Heights Junior/Senior High School, where I hope you'll join us.



Ricky Davis
General Manager

Kilowatt

Vol. 55, No. 1, January 2024 (USPS 783-900; ISSN 1087-4747) is published by the Member & Public Relations Department of Clay Electric Cooperative, Inc., Highway 100 West, Keystone Heights, Florida, 32656. Subscription \$1 per year to co-op members. Periodicals postage paid at Keystone Heights, Fla. and at additional mailing offices.

Nick Jones, editor
NJones@ClayElectric.com

Postmaster:
Send address changes to
Kilowatt
PO Box 308
Keystone Heights, FL 32656

On the cover: Lineworker Jacob Landry, of the Salt Springs District, prepares a transformer for a switchover.

Meet the candidates



Susan Reeves, District 3

A Hawthorne resident, Reeves was first elected to Clay Electric's Board of Trustees 42 years ago. She's held all positions on Clay's Board of Trustees, and she's currently the president of the Board of Trustees at Seminole Electric.



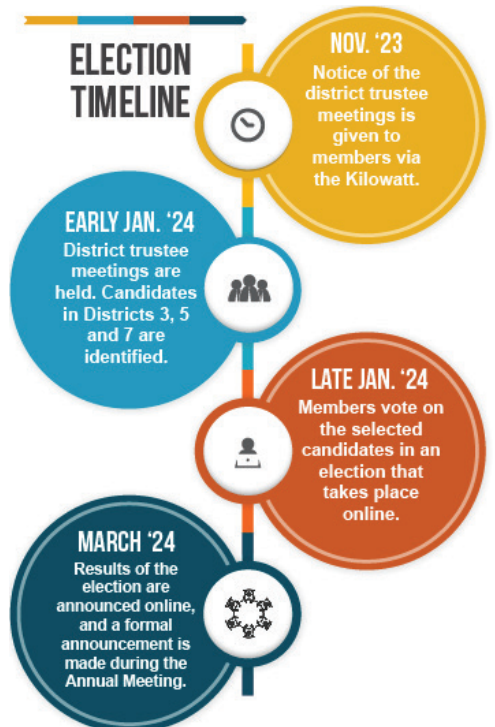
Dewitt Hersey, District 5

A Starke resident, Hersey is also the Board's secretary. A member of Clay Electric since 1960, he was first elected to the Board in 2012 and has previously held the positions of president, vice president and treasurer.



John Henry Whitehead, District 7

A Union County resident, Whitehead was appointed to fill the remaining term of his late father, who shares the same name, in 2007. He retired as a colonel in the Florida Department of Corrections, where he served 35 years.



‘Cutover’ brings more reliable energy to Salt Springs members

Clay Electric is constantly working to make your energy more efficient, reliable and in turn, affordable. And we know there’s nothing worse for our members than a power outage.

Sometimes, outages occur in the name of progress, and last month, some Clay Electric members in Salt Springs were notified of a planned outage for just that reason. Members including hardworking people like Mike, who operates a Sunoco station day-in and day-out along Highway 19.

which Clay Electric had used mail and email to inform members would occur. Originally from New York, where he did other work and also operated a convenience store, he’s lived in Salt Springs for eight years with his wife, daughter and son.

He’s happy to have Clay Electric as his power provider.

“I’ve never had service like this anywhere else,” Mike said.

The reason for the outages was to convert a distribution line, doubling the output from 7,200 volts to 14,400 volts. The project took weeks of planning, followed by two-and-a-half days of work on the ground. Approximately 60 employees from multiple departments and districts worked to change transformers and fuses, followed by the actual cutover.

“A big thing is that it’s more efficient,”

said Engineer Evan Stanley. “The higher voltage means less current on the lines, which means lower line loss, which means more capacity.”

In turn, it also means a reduction in power costs, and because Clay Electric is a member-owned cooperative, it benefits them, too.

Notably, most of our system has made the switch to 14,400 volts, and these projects bring everyone up to standard.

The cutover went smoothly, was completed in the scheduled timeframe and our members living in Salt Springs now have more reliable power.



Crews involved with the switchover meet up for a final briefing.



Mike operates the Salt Springs Sunoco.

“I really love it (Salt Springs),” Mike said. “It’s quiet and people have been so nice here.”

Mike experienced a brief outage from a voltage conversion or “cutover,” for



Your cooperative is constantly thinking about the future. And while just about all of our 300+ vehicle fleet — including work trucks, bucket trucks and digger derricks — is gas-powered, you might soon see a pickup sporting the Clay Electric logo that runs entirely on electricity in your neighborhood.

The Ford F-150 Lightning that’s recently been added to the fleet is charged up with the same electricity that’s sent to your homes, and versus our gasoline engine trucks, it’s a fraction of the cost to operate. The Lightning is a Pro model, which is essentially the entry-level work truck model.

The truck is equipped with the “standard-range” power unit that’s good for an EPA-estimated 240 miles of driving range. Depending on the configuration, a Lightning is capable of towing between 5,000 and 10,000 pounds, Ford says.

Your co-op is cognizant to the shift that’s apparent in the American automotive industry as manufacturers continue to roll out more EVs to their lineups. It’s the second EV added to the fleet, and the Lightning will be parked next to the co-op’s Chevy Bolt in the Member and Public Relations department at headquarters in Keystone Heights.

The legislators listed serve constituents who reside within Clay Electric's service area. Only counties served by the co-op are listed.

legislativedirectory2024



Kat Cammack (R)
US House District 3
 Alachua, Baker, Bradford,
 Columbia, Dixie, Gilchrist, Levy,
 Marion, Suwannee, Union

2421 Rayburn House Office Building
 Washington, DC 20515
 202-225-5744
 Gainesville: 5550 NW 111th Boulevard Suite A
 Gainesville, FL 32653
 Phone: (352) 505-0838
 Ocala: 3301 SW 34th Circle, Unit 402
 Ocala, FL 34474
 Phone: (352) 421-9052
 cammack.house.gov



Aaron Bean (R)
US House District 4
 Clay & Nassau counties

1239 Longworth House Office Building
 Washington, DC 20515
 Phone: (202) 225-0123
 Green Cove: 820 N. Orange Avenue
 Green Cove Springs, FL 32043
 (904) 319-9433
 bean.house.gov



Michael Waltz (R)
US House District 6
 Flagler, Lake & Volusia
 counties

216 Cannon House Office Building
 Washington, DC 20515
 202-225-2706
 DeLand: 120 South Florida Avenue
 DeLand, FL 32720
 386-279-0707
 Palm Coast: 31 Lupi Court
 Palm Coast, FL 32137
 386-302-0442
 waltz.house.gov



Chuck Brannan (R)
House District 10
 Alachua, Baker,
 Bradford, Columbia &
 Union counties

Baker County Courthouse, Suite 117
 339 East Macclenny Avenue
 Macclenny, FL 32063-2231
 (904) 259-0995
 1262 SE Baya Drive
 Lake City, FL 32025
 386-758-0405
 Tallahassee: 222 The Capitol
 402 S. Monroe Street
 Tallahassee, FL 32399-1300
 850-717-5010



Sam Garrison (R)
House District 11
 Clay County

1835 East West Parkway, Suite 18
 Fleming Island, FL 32003-5311
 (904) 278-2062
 Tallahassee: 222 The Capitol
 402 South Monroe Street
 Tallahassee, FL 32399-1300
 (850) 717-5011



Bobby Payne (R)
House District 20
 Clay, Marion & Putnam
 counties

3841 Reid Street, Suite 5
 Palatka, FL 32177-2509
 386-312-2272
 Ocala: 315 SE 25th Avenue
 Ocala, FL 34471-2689
 (352) 732-1244
 Tallahassee: 400 House Office Building
 402 S. Monroe Street
 Tallahassee, FL 32399-1300
 Phone: 850-717-5020



Yvonne Hayes Hinson (D)
House District 21
 Alachua & Marion
 counties

2815 NW 13th Street, Suite 202,
 Gainesville, FL 32609-2865
 352-264-4001
 Tallahassee: 1302 The Capitol
 402 S. Monroe Street
 Tallahassee, FL 32399-1300
 (850) 717-5021



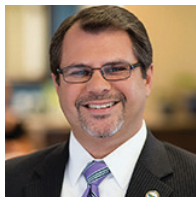
Chuck Clemons (R)
House District 22
 Alachua, Gilchrist & Levy
 counties

105 SW 140th Court, Suite 1
 Newberry, FL 32669-3391
 352-313-6542
 Tallahassee: 422 The Capitol
 402 S. Monroe Street
 Tallahassee, FL 32399-1300
 Phone: 850-717-5022



Stan McClain (R)
House District 27
 Lake, Marion & Volusia
 counties

315 SE 25th Avenue
 Ocala, FL 34471-2689
 (352) 732-1313
 Tallahassee: 418 The Capitol
 402 S. Monroe Street
 Tallahassee, FL 32399-1300
 (850) 717-5027



Tom Leek (R)
House District 28
 Volusia County

1540 Cornerstone Boulevard, Suite 240
 Daytona Beach, FL 32117-7144
 (386) 238-4865
 Tallahassee: 418 The Capitol
 402 S. Monroe Street
 Tallahassee, FL 32399-1300
 850-717-5028



Jennifer Bradley (R)
Senate District 6
 Alachua, Baker, Bradford
 Clay, Columbia, Gilchrist,
 Union counties

1845 East West Parkway, Unit 5
 Fleming Island, FL 32003
 (904) 278-2085
 Tallahassee: 408 Senate Building
 404 S. Monroe Street
 Tallahassee, FL 32399-1100
 (850) 487-5006

Co-ops have sights locked on bills that could impact members

By Drew Love
Florida Electric Cooperatives Association

The 2024 Legislative Session began Jan. 9 and lasts a total of 60 days, concluding on March 8. The makeup of the Senate consists of 28 Republicans and 12 Democrats, while the House stands at 84 Republicans and 35 Democrats. Two newly elected House members filled vacated seats, along with one outstanding seat, which was filled Jan. 16. During the upcoming session, electric cooperatives like Clay Electric will focus on legislation that could impact our consumer-members.

Florida families and businesses expect the lights to stay on at a price they can afford. Our energy policies must continue to embrace this fundamental promise of safe, reliable and affordable electricity to all. According to the Environmental Protection Agency’s (EPA) Energy Information Administration (2021), Florida’s electric grid maintains a

reliability rate of 99.9 percent. As Florida and the nation move toward a future more reliant on electricity to power the economy, today’s energy decisions will determine if there are enough resources to meet tomorrow’s need for safe, reliable and affordable energy.

A total of 1,665 bills had been filed as of Jan. 8 for the 2024 regular session. The opening day of session was the last day for members to file bills. Developing a budget for the upcoming fiscal year is the only constitutional requirement of the Legislature.

Gov. Ron DeSantis’ recommended budget of \$114.4 billion is under review by the respective committees of jurisdiction. These recommendations provide a blueprint for the legislature to consider as both the House and Senate begin crafting the 2024/2025 Appropriations Act.

Some of the issues up for consideration include legislation relating to a comprehensive House energy bill, which has yet to be

filed, but we will be monitoring it closely. In addition, we anticipate another tax break package will be forthcoming.

Here are a few other bills we are monitoring:

- **SB 28/HB 107** relating to electric and hybrid vehicle license fees
- **SB 1084/HB 1071** addressing state regulation of EV charging stations, thus preempting local governments from regulating
- **SB 340/HB 275** increased penalties for intentional damage to critical infrastructure
- **SB 1624** dealing with prohibiting amendments to local governments’ comprehensive plans that conflict with resiliency facility classifications

Clay Electric Cooperative is a not-for-profit electric utility and is very sensitive to government mandates that can result in increases in your electric rates or diminish the safety and reliability of utility infrastructure. As legislation moves through the process, we will continue to oppose proposals that could erode our mission.



Travis Hutson (R)
Senate District 7
Flagler, Putnam & Volusia counties

4875 Palm Coast Parkway NW, Suite 5
Palm Coast, FL 32137
386-446-7610
Tallahassee: 416 Senate Building
404 S. Monroe Street
Tallahassee, FL 32399-1100
(850) 487-5007



Tom Wright (R)
Senate District 8
Volusia County

4606 S. Clyde Morris Boulevard, Suite 2-J
Port Orange, FL 32129
(386) 304-7630
412 Senate Building
404 South Monroe Street
Tallahassee, FL 32399-1100
(850) 487-5008



Keith Perry (R)
Senate District 9
Alachua, Levy & Marion counties

5700 SW 34th Street, Suite 225
Gainesville, FL 32608
(352) 264-4040
405 Senate Building
404 South Monroe Street
Tallahassee, FL 32399-1100
(850) 487-5009

The Clay Electric Foundation Board of Directors approved

\$205,410 IN GRANTS

during its Nov. & Dec. meetings.

Lee Conlee House (Putnam County) \$10,000

The certified domestic violence center serving Putnam County. It provides crisis intervention, an emergency shelter, advocacy, treatment, prevention and education through the establishment of community partnerships. Grant funds will be used to purchase materials for a youth-targeted domestic violence program.

American Legion Auxiliary Unit 230 (Alachua County) \$2,500

Supports the American Legion and seeks to enhance the lives of veterans, the military and their families at home and abroad. Grant funding will be applied to the purchase of an LED sign for the unit's headquarters in Hawthorne.

Project Hope of Marion County (Marion County) \$15,000

Provides solutions for homelessness among women and their dependent children. Grant funds will help offset the costs associated with resident housing.

Rotary Club of Palatka (Putnam County) \$20,000

An international service organization focused on addressing the human condition through investments of time, talent and money. Grant funds will help install shading over the playground equipment at Rotary Project P.L.A.Y. Park, a community playground.

Goodwill Industries of North Florida (Putnam County) \$20,000

A local, not-for-profit organization that removes barriers to employment through training, education and career opportunities for the communities it serves. Funding from the grant will help the Take Stock in Children program provide college scholarships.



Oakleaf FFA Alumni and Supporters received a \$11,800 grant from Operation Round Up.

Keystone Heights Sports Association (Clay County) \$5,000

Provides recreational opportunities for children in Keystone Heights and the surrounding communities. Funding from the grant will be used to provide safety equipment for the youth program.

Fellowship of Christian Athletes (Alachua County) \$12,110

Focuses on serving local communities around the globe by engaging, equipping and empowering coaches and athletes to unite, inspire and change the world through the gospel. Grant funds will provide materials for FCA Campus and Community Huddle group sessions.

Child Advocacy Center, Inc. (Alachua County) \$20,000

Works with child victims to break the cycle of abuse by offering therapy and case management. Grant funds will help complete the Center's five-year renovation project.

Mt. Carmel Community Resource Center (Putnam County) \$6,000

The resource center is a food pantry that has served Palatka since 2002, and funding from the grant will help purchase commercial tile flooring and a commercial freezer.

Kristi Overton Johnson Ministries (All counties) \$2,500

Its mission is to encourage, equip and empower people to live victorious lives, especially within the prison system. Grant funds will be used to support the Victorious Living Prison Outreach program.

Partnership for Global Advancement (Bradford County) \$10,000

A nonprofit charitable organization dedicated to transforming lives by helping people develop wholeness in spirit, soul and body. Funding from the grant will support the development of Shiloh Farm - Whole Man Mission, a ministry that assists former inmates in transition.



Bethlehem Methodist Episcopal Cemetery Restoration Org. received \$3,000 from ORU.

Fort Clarke Middle School Band Boosters, Inc. (Alachua County) \$7,500

A group of volunteers who support the FCMS band program. Grant funds will help absorb the cost of student participation.

Waste Not Want Not, Inc. (All counties) \$20,000

A volunteer-based group whose mission is to prevent the discarding of food and other items that can be used to fight hunger and poverty. The group does this by rescuing food daily from numerous sources for distribution to local charitable organizations, and through other cost-effective initiatives. Grant funds will be used to support the food rescue and distribution program.

10 Can, Inc. (All counties) \$10,000

An outdoor ministry for military families. They rehabilitate wounded warriors by strengthening their family foundation. This is done through outdoor recreational therapy, creating outdoorsmen and providing wilderness experiences for urban families. Grant funds will be used to support the Healing Hometown Heroes program.



The PACE Center for Girls received a \$10,000 grant from Operation Round Up.



Southeastern Food Bank received \$10,000 from Operation Round Up.

To apply for a grant, visit
clayelectric.com/operation-round

The Trading Post

Submit your Trading Post ad by sending it to Clay Electric, PO Box 308, Keystone Heights, FL 32656. For more Trading Post ads or to submit your ad online, visit ClayElectric.com.

GOLF CART, all new batteries, good condition w/charger, \$2,500. 352-219-8288 DAVIS

MEN'S CARHARTT coveralls: Size 58 Reg, brown canvas, quilted lining, zipper & snap closures on legs & front, seldom worn, very warm, exc cond, \$100. Hide tanning equip: Sleepy Creek wire stretchers 40"L, #23, 1/2 dozen, Blue Ridge SureTan powder, bell scraper, packing slip, unused, \$40. 386-530-6852 Percifield

(2) LIKE-NEW Bridgestone Potenza Sport Tires size 275/45 R18, approx. 300 miles, used on front of car. Pd \$317.99 + tax, selling \$450 cash. Brand new in pkg Stearns & Foster Estate Hurston 14.5" Luxury Firm Euro Pillow Top Mattress, full size, 54x75, \$1,500 firm. Melinda 904-468-0484 Marshall

2021 TOYOTA CAMRY, low mileage 23,532, runs great, no problems, \$24,000. 904-307-1853 Looney

2019 HARLEY DAVIDSON Ultra Ltd \$20,500, 1 owner, 6,811 miles, garage kept, new battery, upgrades/extras included (approx. \$2,500 value). 352-538-5298 Hewitt

2 BURIAL PLOTS in Jacksonville Memory Gardens, Orange Park, Everlasting Life section. Current value \$6,400, asking \$4,000. Todd 904-233-0660 Lawson

PIGS, born 9/1/2023, Yorkshire Duroc mix, \$75. Ring neck pheasants, mating pairs born June 2023, price per pair boy & girl, \$350. 352-525-0229 Evans

RED HAT ladies' clothing sizes X & XL, jewelry, 3 hats, 3 headbands, 2 small purses, 8 tops, 2 slack/top sets. \$40/all. 904-406-0463 Louden

STEEL STRING acoustic guitar w/stand. Rogue brand, exc cond. \$140. 904-327-4269 Murphy

LAWNMASTER-GAS powered w/electric start (no pulling). 1.5 yrs old (used about 20x) charger incl. Also have addl unit (engine fine

trimmer needs work). \$100/both, less for one. Lv msg. 904-602-5554 Gaskill

1955-1964 CHEVROLET car rear ends, 3:70 to 3:36 gear, \$300 ea. I need a 3:08 car rear end. 386-325-7243 Hudson

1993 CHEVY S10 PU, built for racing. LT4 engine, 6 spd, front & rear suspension, adj. GA1 shocks, 4-wheel disk brakes. Must see to appreciate. Xtra parts incl. Clear FL title. Serious buyers only. Sold as is, where is. \$7,000 obo. Lv msg 386-496-1299 King

BRAHMA BULL yearlings, gray/white, breed to bull, UF. Text if no answer. 386-466-4885 Wilson

2,000+ MAGAZINE auto ads: rep mix of autos, most color, 1970s up, exc cond, sealed in clear poly sleeves, wooden crates incl, \$2 ea. 90 Coca-Cola mag ads in clear sleeves, \$175. Huge stamp album, 8 lbs, high denomination European, make offer. 5 fancy boxes for smaller phono records, \$600. Med size walker 6'H, 4 wheels, \$550. 80 First Day covers Smithsonian Air Museum, 1973-81, \$90. 3 vol American Airmail Society publications, \$350. Most pick up only. 904-272-1854 Simpson (second ad revision 12/21)

AGRI-FAB #45-0530 Tow Broadcast Spreader new never used, pd \$99 asking \$80 obo. 352-474-7978 Keeney

CHEVY 400 SB Crankshaft Re-man, still in box, turned .010. \$125. HD engine stand \$30. 1969 11" factory flywheel, disc & pressure plate, 168 tooth, like new, from my '69 427 Corvette in 1971, \$100 firm. Fort McCoy. 352-425-1144 Michaux

2010 FORD EXPEDITION beautiful cond Eddie Bauer SUV, new wheels, tires & pressure sensors, new transmission, radio, brakes, spark plugs, everything works, electric folding 3rd row seats, trailer pkg, 117,100 miles & good for another 100,000. \$12,900. 904-651-3979 Barton

SHIATSU FULL body massage chair, Longevity recliner w/heat roller balls, air, massage therapy from Head2Feet, used about 3 hrs. Pd \$1,250, asking \$650 obo. Lv msg 386-350-0408 Brinkley

ELECTRIC RANGE *Brand New* Whirlpool freestanding, keep warm setting, stainless steel 5.3 cu.ft. 30" warming drawer, \$649. GCS 973-517-6485 Cox

TREADMILL FOR power walking-folds up, free, pick up. Vg shape. Completely furnished dollhouse w/curtains & furniture & family, has living room w/fp & sewing area, kitchen, bedroom & bathroom w/

all fixtures, \$200. 3 doll beds w/homemade quilts, \$50 ea. Txt pls 904-315-6266 Brown

2007 HONDA SABRE 1100 motorcycle, great cond (always garaged) maroon cycle w/low miles, new tires, windshield, saddlebags & upgraded King/Queen mustang brand seat. \$5,000. 813-924-3385 Arrington

CEMETERY PLOTS Oaklawn Cemetery, Jacksonville, 2 grave sites in old historic section, near San Jose Blvd. Sell separately or together. \$14,250. 904-614-7994 Lilley

TREADMILL LIKE new NordicTrack T6.5S, 1 yr old, never used. Pd \$700 Jan. 2023, asking \$450. Raiford. 702-767-4233 Rhine

THICKNESS PLANER Black & Decker 12.5" thickness planer w/extra blades & adjustment tool, \$100. 217-497-9420 Okuley

SAVAGE AXIS Youth Rifle .243 WIN Like new/only 1 hunting season of use/fewer than 50 rds fired/Mossy Oak finish/comes w/3X9 Weaver scope, sling & butt cuff/ind 118 rds ammo (\$210 value).

Must show photo ID & sign bill of sale, \$500. 904-788-6144 Rogish
LASERLYTE QUICK Time Target Set, new, used 1x, cost over \$280, sell \$225. Please contact by email not phone, wlowe59@yahoo.com. 386-268-059* Lowe (include phone? Is incomplete)

BERETTA OVER/UNDER shotgun, hard-to-find variation of Beretta 686 12 ga shotgun. "S" & "Special" designations are almost impossible to find in USA. Factory sling swivels, 6 factory "Mobilechokes," tool, gun acock, case & nonattached high visibility fiber optic front site. Exc cond, no blueing/wood issues, \$1,350. 352-213-4027 McAfee

LEUPOLD RIFLE scope, 2-7x33 mm, as new, retails \$300, sell \$200. Tom 352-454-0260 Wyshinski

BRIGGS & STRATTON responder/power unit 6,250 watts 8,500 starting watts w/power cables, <30 hrs, \$600. 2 Harley leather jackets XXXL, never worn, \$800 ea. 2 leather saddlebags, \$75. 2 lamps w/shades, \$50. 3-wheel trikes: 26", needs assembly, \$150; 26", partly assembled, \$100; 24", purple, \$100. 24" bike, \$75. 21" Dell computer, \$20. Several RC airplanes. George 904-282-2149 DeGidio
BAYLINER CAPRI 175 135 HP stern-drive bimini top cover, fish depth finder, all safety equip, well maintained, \$4,000 obo. Orange Park. Bob 773-320-3974 Biondo

Scripture

"Sensible people control their temper; they earn respect by overlooking wrongs."

Proverbs 19:11



Black-eyed peas and collards

Ingredients:
16 oz collard greens, shredded
2 15 oz cans of black-eyed peas, drained
3 tablespoons olive oil
Medium yellow onion, chopped
2 garlic cloves, minced
1 cup ham, cooked chunks
1 cup chicken broth
1 teaspoon salt (adjust as necessary)
3/4 teaspoon black pepper (adjust as necessary)

Instructions:
Heat Dutch oven over medium heat. After a few minutes, add olive oil, then garlic and onions and cook for about five minutes. Add collards, let them cook down, stir and cover for a few minutes.
Now add your ham and broth, season with salt and pepper. Turn heat to medium-low and let cook for 20-25 minutes.
Add your black-eyed peas and stir. Turn off heat and let sit for a few minutes before serving.

CLAY ELECTRIC BOARD OF TRUSTEES

Meets in Keystone Heights at noon Jan. 25, Thursday, Feb. 22, Thursday, March 28 and Wednesday, April 24.

Karen Hastings - President
Citra - District 9
Kelley Smith - Vice President
Palatka - District 2
Dewitt Hersey - Secretary
Starke - District 5
Jo Ann Smith - Treasurer
Micanopy - District 8
Cindy Loose - Trustee
Keystone Heights - District 1
Susan Reeves - Trustee
Hawthorne - District 3
Carl Malphurs - Trustee
Alachua - District 4
Jimmy Wilson - Trustee
Middleburg - District 6
John Whitehead - Trustee
Lake Butler - District 7

Ricky Davis
General Manager & CEO

EXECUTIVE STAFF

Bryan Gunter
Chief Operations Officer
Chris Bryan
Chief Engineer
Mark Maxwell
Chief Financial Officer
Derick Thomas
Chief Public Relations Officer
Justin Williams
Chief Officer of Corporate Services and Human Resources
Brent Richardson
Chief Information Officer
Cheryl Rogers
Chief Audit Officer

DISTRICT MANAGERS

Troy Adams
Gainesville & Lake City
Justin Williams
Keystone Heights
Andy Chaff
Orange Park
Derek Hembree
Palatka & Salt Springs

COMMUNICATIONS

Kathy Richardson
Manager of Communications



Clay Electric Cooperative, Inc.

A Touchstone Energy® Cooperative

2 SIDE-BY-SIDE grave spaces Holly Hill Memorial Park, sold out section, Garden of Love. Lot 120, spaces 3 & 4. Also incl 2 burial vaults & 2 interment fees. Deed transfer of \$250. Prices today would be \$15,770; asking \$8k. Jenifer 904-662-8974 Jenkins

NIGERIAN DWARF goats: 4 adult nanny, 7 kids, born b/w Oct. 19-25. \$150 ea sale/trade. Would like a dairy cow, pregnant or in milk. Call/txt 352-509-1705 Jewell

RENTAL: 1 bedroom furnished lake front apt, short time ok. 2 miles from Clay co-op, \$800. 352-473-3818 Mattox

PING PONG table Brunswick XC3 exc. cond, foldable, hardly used, no evident scratches. 1 small blemish. 2 balls, 1 net, 2 paddles, orig owner. Sells for \$850 + tax + shipping. NO AMs. \$450. Pick up only, 3 miles off 441 in Alachua. 727-692-6352 Schell

KAYAK - 14' Heritage C Mark 2, hardly used in great shape, incl life preserver & paddle, \$100. 904-505-6951 Caldwell

ATOMSTACK S10 pro Laser Engraver w/air pump & 330X210mm honeycomb laser bed. Only 6 mo. old, paid \$650, sell \$400. Works great. 904-237-0673 Ballman

VIBURNUM, 3 gal. \$12.50 1 gal. \$5 min. 5. Makes great privacy fence. Golden Rain Trees, 3 gal. & up, \$15 & up. 352-591-1374 Shaffer

CLASS C motorhome 2011 Fleetwood Jamboree Sport 28Z, 29'3"L, 8'6"W, 11'6"H, 12,081 miles. 6.8L Triton V10 Eng, Ford E450 Chassis, ONAN 4000 Gen, 1 Slide, Gas Fuel, Sleeps 8, Rear Sofa Bed, Drop Down Queen Bed, Double Kitchen Sink, 3-Burner Range, Refrigerator, Shower, Overhead Cabinets Throughout, Microwave (needs work). \$25,000. 904-214-7836 Edwards

BURIAL PLOTS: 4 plots in Memory Gardens, Orange Park in Bible section. Valued at \$12,800, asking \$10,000/4 or \$2,500 ea. 904-910-1016 Doll

METAL GARAGE door w/opener & all hardware. Like new. Raised panel. 10'W 9'H, pick up only, \$425. 401-862-3339 Prata

LIKE NEW: Samsung (red) gas front load dryer w/extra drawer on bottom, \$200. John 904-278-6644 Blevins

4 PADDED rotating dining chairs on castors, \$80. 352-328-5792 Downie

DANCE COSTUMES: Med adult brown/white full length body pant slvls, \$25; small adult full length Puss'n'Boots, \$25 obo. Outers shotgun cleaning kit for 12, 20, 410 GA NIB, \$100. Truck topper 2003 Dodge Ram 1500, \$675. Peak 1 stainless steel cook n eat set, new, \$20. NIB 2-person smiley face float tube, \$15. 3 geometrical pics 12"W x 24"L ea, set \$15. NIB Uncle Mikes inside pant holster, sz 16 rt hand, \$15. NIB Wilson Ultra golf balls, \$20. Binoculars Selsi 10x50 wide angle 367' @ 1000 yds, \$50. Sony Subwoofer SA-W 2500, \$60. Igloo 2-gal water jugs w/spouts, 4/\$10 ea, \$30/all. New Yamaha oil filter 150 HP outboard motor, \$15. 904-763-0478 Sweat

BOBWHITE QUAIL: Fully flight-conditioned northern & Wisconsin quail avail Alachua. Call for info. 352-316-1644 Conerly

FREE PROPANE tank: 120 gal. horiz cyl storage tank w/21 gal. propane. Capped off. Good cond. Use as-is or to make lg BBQ. 904-264-1073 VanDuyun

3 BURIAL PLOTS: Side-by-side adjoining, located at Woodlawn (NE Orlando) near orig gate, will sell only as group, \$16,000. 352-817-2652 Schumacher

INNOVA ITM5900 inversion table. Max ht 6'6", max wt 300 lbs. Incl massage & heat pad acces-

sory w/power adapter. Heavy duty square steel tube construction w/exceptional padding. As new, manual incl. \$100. Text only 443-417-6601 Refsnider

1964 CHEVROLET CHEVELLE SS, true super sport hot rod. 2009 frame-off restoration, HP 400 CI SBC, bored .030 over, (406 CI), full roller engine, built to race, Porsche red, laser straight body, good chrome/stainless, exc body panel fit/alignment, exc tires, int/ext near stock. Incl bld/restoration photos & documentation & new QFT 750 carburetor overhaul kit. Clear Florida title. \$43,000. Holley 4160 750 CFM square bore carburetor, used. Freshly/completely overhauled, \$500. Call after 12 pm only. 904-333-8142 Arthur

BABY GRAND piano, 70+ yrs old, Lt blond wood finish, may need tuning, incl Solovox folio. Best offer. Lv msg 904-264-4767 Hartmann

DELUXE LIONEL electric train: eng, 9 boxcars w/tracks, orig pkg, \$600. 21 Barbie dolls, orig pkg, no duplicates, \$400. 13-pc Roseville pottery, no chips/cracks, \$350. 1930s Myott Staffordshire England china, 56-pc autumn design, \$100. Pandora bracelet, 19 charms, \$300. 904-567-0622 Funk

RYOBI GENERATOR 6500 watt, new, still in box. \$700. 352-339-1492 Jaworski

2 MICHELIN 235/80R 22.5 RV or semi trailer tires, good tread, \$25 ea. Fort McCoy. 904-472-4374 Stenberg

BURIAL PLOT, Masonic section, Memory Gardens, Orange Park, valued at \$3,000, will sell for \$2,300 obo. Call Bob/Lou 386-684-4115 Cox

MOTORCYCLE HARLEY handlebars \$30, back rest \$30 like new; antique buck saw \$75; Bostitch roofing gun & 11 coil nails & oil, \$75; Dewalt framing gun & oil, \$75; Serger sewing machine w/tape \$50; vehicle 8 track tape deck \$50; house/garage 8 track tape deck \$30; 5 pr 80x63 solid foam back curtains red, like new, \$100; HM utility trailer 4x10, \$800 obo. Claire 352-289-4516 Kelly

2 MONGOOSE MALUS Adult Fat Tire Mountain Bikes, 26" wheels, 7-spdt, twist shifters, steel frame, mechanical disc brakes, silver/red, new larger seats, baskets, bells & cell phone holder. \$500/1, \$1,000/both. 386-316-7404 Boyd

1984 RANGER BASS Boat \$7,000 obo: good cond, runs exc, Black Max Mercury outboard bored out to a 250. Lv msg 904-275-3548 McDaniel

2007 FLEETWOOD POP UP 3-way fridge, roof air/heat, 2 king bunks, bench seat converts to bunk, cassette toilet, inside/outside showers, water heater, freshwater, \$4,500 obo. Remington 783 Black Bolt Action Rifle - 243 Winchester - 22", \$325. Just like new, some ammo. 352-526-5748 cell 941-518-9672 Martin

CORVETTES 15 Jim Beam decanters, Franklin Mint Corvettes 1953-80s. Don 386-754-4143 Colombaroni

4 CHAIRS, Queen Anne style, \$50. Electric grill BBQ, \$30. 11' fiberglass step ladder, \$100. Cash only. Mon-Sat 10am-7pm 352-495-8994 Cope

5TH WHEEL 40' w/3 slides on leased site Arrowcreek Campground Gatlinburg Tenn. Under

metal covered roof 24x40 w/12x40 deck. Creek in front of unit. \$32,000. Call for pics. 904-566-0646 Mallicoat

3.3 IMPROVED ACRES in Bradford County, no impact fees, close to Keystone Heights. New well, partially cleared, 200amp square D electric panel, water pipes ran throughout. Sheds do not convey* \$85,000. 352-214-1287 Rhoden

WHIRLPOOL MICROWAVE 1.1 cu ft, 900w cooking power, silver, 12 7/25"H, 21 11/50"W, 15 7/10"D, turn table. Used only to warm, never for cooking. Pick up. \$145. 352-685-2029 Ledoux

FREE FERNS, trees & plants. You dig. This ad good all year. 904-264-3788 Vanzant

ANTIQUE LARGE fireplace mantle & ball & claw foot table. 904-264-3788 Barnes

HARDLY USED PRO-PLUS 36 Varidesk. Usually retail around \$375-400. First comer w/cash takes it. SW Gainesville. \$150. 352-665-3821 Stengle

PIGS 9 Yorkshire, 1 Hampshire. Avg 100 lbs. Raised on grain in concrete pens. All wormed/vaccinated. \$200 ea or \$185 apiece for all. 352-682-9374

2015 JOHN DEERE tractor, 3032, 31hp. MFWD, hydrostatic, 3 pt. hitch, PTO, 873 hours, everything works, good cond, comes w/Big Tex 7X16 dual axle trailer, \$14,000 obo. 904-466-1318 Uttere

POWER CHAIR (wheelchair). Fully articulated seat & leg rests, w/charger, needs batteries. 352-575-6969 anytime Boczkiewicz

2003 GMC YUKON XL SLT has a few issues. ABS light stays on. 223,200 miles. Still very drivable. 386-497-1335 Beaumont

TOW-BEHIND disc harrow for ATV/riding mower, 39"W, 8-11" discs w/wts & chain rake drag harrow 4'W 6'L, new, \$150/both. Dremel 16" 2-spdt scroll saw w/foot switch, vg cond, \$100. 352-473-1264 Kuntz

PRIDE JAZZY Select Mobility Scooter w/lift, \$900. 904-964-5695 Browning

10" CRAFTSMAN table saw; 10" Craftsman Radial arm saw - \$125/ea, \$225/both. Leigh Super 12 Dovetail jig (never used, \$400 new), \$300 obo. 352-672-1275 Pettit

INVACARE 5000IVC hospital bed w/mattress, \$350 obo. Wood electronics cabinet w/double glass doors, \$35. Kenmore Elite king size dryer, \$45. Maytag Commercial Technology Direct Drive front load washer, good cond, \$75. 904-424-9199 Urff

CROSSBOW - HORTON, The Brotherhood, red dot scope, 340 FPS, \$175. Lloyd 352-222-2749 Bizzell

COLLECTIBLE WATERCOLOR by Karen Vernon & other artists: Lg gold-framed print signed by artist (340/950) in vg cond, \$200; forest watercolor w/deer, \$50; peach framed floral print, \$25; watercolor by Joy Allredge, \$50; signed oil repro Girl Clown by Red Skelton, \$600. Call to discuss viewing/delivery, no shipping. 386-466-5749 Allison

TRUCKLOAD OF oak firewood, \$75. Antique turpentine clay pots, \$10/ea. Lighter wood, \$10/ bucketful. Lv msg 352-481-7028 Courtney