

Kilowatt

The newsletter for members of Clay Electric Cooperative, Inc.

July 2023



Youth Tour:
Monumental visit
to Washington

Power cost decreases 5.3% on July bills

Your cooperative is lowering the cost of power in July due to the decreasing price of natural gas. It comes as a result of our wholesale power supplier, Seminole Electric Cooperative, continuing to purchase fuel at the lowest possible price.

The 5.3 percent decrease means members using the industry household average of 1,000 kWh of power will pay \$123, a \$7 savings.

The cost change will be shown on your July bill in a power cost adjustment (PCA). The amount of savings for each member varies based on how much electricity is used.

The PCA marks the third time this year the average Clay Electric member had a lower power bill. In March and April, your cooperative lowered the cost of power by 11 percent. Also in March, members were refunded \$12 million in Capital Credits, and

entitled members saw a credit on their bill.

Notably, a rate study indicated that Clay Electric should increase its Access Charge to recoup more of the fixed costs associated with building and maintaining the distribution system. The Access Charge is being increased from \$29 to \$32 beginning in July. Even with this increase, the net decrease for the month of July is \$7.

The Access Charge is the component of a member's bill that recovers some of the fixed costs that come from serving an individual member, regardless of how much electricity is used. These costs include the cost of the meter, wire and other equipment used to deliver electricity, as well as meter reading technology and billing expenses.

All utilities have some type of an access charge.

Storm season: Don't wait. Plan now.

The most predictable thing about the Atlantic hurricane season? It's impossible to perfectly predict.

On June 2, just the second day of the 2023 season, Tropical Storm Arlene formed, and while it drifted harmlessly to the south, it serves as a reminder of how fast Mother Nature can organize a system and how fast we in turn must be prepared to respond.

A forecast team from Colorado State University has predicted a slightly below-average level of activity this season, and NOAA forecasters appear to be in agreement, predicting a near-normal level of hurricane activity.

The good news? Your co-op is ready with a plan in place should disaster strike. As we shared with you in the previous issue of *The Kilowatt*, trees and other forms of vegetation continue to be blamed as a leading cause of power outages, so if you see our crews out pruning back trees in your neighborhood, it's because we're working relentlessly to bring you reliable power to ensure your lights stay on when severe weather rolls through.

It's important to remember, though, that despite our best efforts, damage can still occur to transmission lines, substations and, of course, power lines. Know when that happens, our lineworkers — your co-op's first responders — and other critical staff are mobilized as priority No. 1 becomes safely restoring power to as many members as possible, as quickly as possible.

As the peak of the season is typically from mid-August to mid-October, I'm encouraging you to prepare right now. That means having the following necessities in an easy-to-find supply kit:

- **Water:** At least a three-day supply, one gallon per person per day.
- **Food:** Five-day supply of non-perishable food that requires little preparation and no refrigeration.
- **Tools:** Flashlight, extra batteries, manual can opener, battery-powered or hand-crank radio, NOAA Weather Radio with tone alert.
- **First aid & prescriptions:** First aid supplies, hand sanitizer and at least one week's supply of prescriptions and medications for your family.

On page 4, you'll find a scannable code that will take you straight to Clay Electric's **2023 Hurricane Preparedness Guide**. The guide contains a list of resources that will help you before, during and after a storm.

Remember, should you see a downed power line, stay away as it could still be energized. If you encounter downed lines while driving, turn around. You can always report an outage or damage by using the **MyClayElectric App** or by logging on to **MyClayElectric.com**. You can also call **1-888-434-9844**.

I hope you and your families all have a safe, fun and relaxing summer, but I emphasize the importance of planning in case of an emergency. You'll always be glad you did.



Ricky Davis
General Manager

Kilowatt

Vol. 54, No. 4, July 2023 (USPS 783-900; ISSN 1087-4747) is published by the Member & Public Relations Department of Clay Electric Cooperative, Inc., Highway 100 West, Keystone Heights, FL, 32656. Subscription \$1 per year to co-op members. Periodicals postage paid at Keystone Heights, Fla. and at additional mailing offices.

Nick Jones, editor
njones@ClayElectric.com

Postmaster:
Send address changes to
Kilowatt
PO Box 308
Keystone Heights, FL 32656

ON THE COVER:

Republican Rep. Aaron Bean stands at the Capitol with four winners of Clay Electric's Youth Tour to Washington contest.



Students learn nation's history, make historic memories in Washington

Four high school juniors packed their bags and headed to the nation's capital, all-expense paid, during the annual Youth Week, joining students chosen by 10 other Florida electric co-ops.

This year, Karis Feagle of Columbia High School, an alternate, Emme Delany of Crescent City High School, Kaygen Williamson of Clay High School and Kaitlynn Casiano of Lake Weir High School (pictured top left, from left to right) each boarded a plane in June bound for Washington D.C.

During their journey, they visited the Capitol, where they were given a tour by Rep. Aaron Bean, a Republican who serves District 4, which includes Clay, Duval and Nassau counties.

Over the course of five days, they visited landmarks, monuments and exhibits including Arlington National Cemetery, the Pentagon, the National 9/11 Memorial, Mount Vernon, Ford's Theatre, the Washington Monument and the United States Holocaust

Memorial Museum, to name some.

"I think my favorite part of the trip would be touring all the beautiful historic buildings like the Capitol and Library of Congress," said Casiano, who also went to her first baseball game.

Delaney said what surprised her the most was being able to tour the Pentagon — the headquarters of the Department of Defense.

"It was such an exciting opportunity to be able to experience that," she said.

Williamson said she enjoyed meeting Rep. Aaron Bean at the Capitol and getting acquainted with veterans at the war monuments.

"It reminded me that although we are all different, as Americans, we are unified," she said.

Feagle said the trip made her realize how passionate she is about the U.S. military, and she said that the week in D.C. went by quickly.

"The thing that surprised me the most was how much we were able to do in the

few, what now feel like short days we had," Feagle said.

The winners of the trip are selected when 26 high schools in Clay Electric Cooperative's service area select a school representative from the 11th grade. They travel to Tallahassee on a three-day expense-paid trip, where they learn and compete to earn one of four spots to Washington.

"(Washington) is a place that everyone should visit at least once."

-Kaygen Williamson

The program at Clay Electric was first implemented back in 1966 through an essay contest.

Co-op members interested in the 2024 Youth Tour to Washington contest can contact their student's school counselor or local district office and ask for the member relations representative.

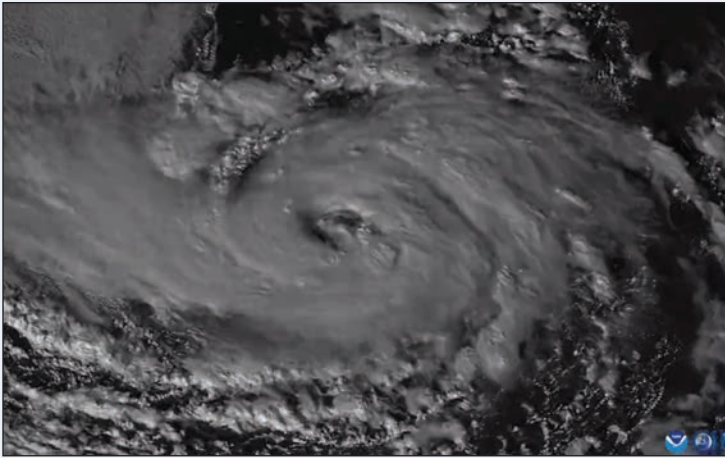
"I can't wait to see where we all go next," Casiano said of her experience.



Hurricane season ‘already off with an anomaly,’ chief meteorologist says

Once again, before the hurricane season’s start date, we’ve seen a tropical system form in the Atlantic Ocean.

News4JAX Weather Authority Chief Meteorologist Richard Nunn says we began our storm season June 1 with Tropical Depression Two, which became Arlene a day later. The first tropical system of the year, however? You might have missed it. But after a re-assessment, the National Hurricane Center in May determined that a system, which formed in the first month of the year should be designated a subtropical storm.



NOAA photo from Jan. 16 of a low-pressure system that would later be classified as a subtropical storm.

“The season’s already off with an anomaly,” Nunn said. “They went backward and said that a low-pressure area with a cold front and a warm front, which means it’s not tropical, was somehow tropical enough to become one of the hybrids. So that became No. 1 in January — even before the season started.”

Nunn, who’s been in front of the green screen at WJXT in Jacksonville for nearly two decades, has been studying weather a lot longer than that, and he pointed out that people should take note of the “new” definition of normal: 14 annual storms, which is a tick higher now than what the number was for over a decade.

“So, when you’re saying 70 percent confidence that we are going to see between 12 to 17 storms, that alone should be a reminder enough that we need to be prepared,” Nunn said.

Whenever a storm threatens the coast, our eyes often turn straight to the “Cone of Uncertainty,” which narrows as a storm moves closer to land. But Nunn says what’s proven to be the most accurate and must continue to be refined is what’s known as the Sea Lake and Overland Surges from Hurricanes model, better known as the SLOSH, which is critical for people in low-lying areas.

“It has proven on our coast and on the Gulf Coast to be accurate over and over again,” Nunn said. “That model is actually kind of reverse-engineered in that what we’re telling you, there’s only a 10 percent chance that we’re going to be off — I mean, that’s how incredible the SLOSH model is.”

For the last three seasons, we’ve had a La Niña, a complex weather pattern that occurs when strong winds blow warm water at the ocean’s surface away from South America, which Nunn says is “fuel on the fire” for Florida’s tropical season.

“The fly in the ointment when it comes to this season is the fact that El Niño (has arrived),” Nunn said.

That typically signals a suppressant for activity in the Atlantic, but it’s also during these times that we might experience a storm with ferocity, much like Hurricane Andrew.

“It only takes one,” Nunn said.



Archive photo from 1992 shows damage left in wake of Hurricane Andrew.

Your cooperative has stressed the importance of having a plan in place before a storm and having enough perishable food, water and other supplies. We’ve also encouraged understanding how to properly and safely operate a gas generator, which comes in handy should you experience an outage.

“Every year, the sad part after the storm is that we report on somebody losing their life because they’re trying to have the creature comforts,” Nunn said. “And generators, as amazing as they are to help when the lights are out to give us those creature comforts, whether it’s warm food or a refrigerator with cold beer, the big guard is following those safety steps.”

Those steps are included in Clay Electric’s **Hurricane Preparedness Guide**, which we’ve provided a link to by scanning the QR code at the bottom of this article. You’ll also find the hurricane preparedness checklist and a list of important resources to help assist you before, during and after a storm.

Scan code with your smartphone to download the
2023 Hurricane Preparedness Guide



The Steps to Restoring Power

When a major outage occurs, our crews restore service to the greatest number of people in the shortest time possible – until everyone has power.



1. High-Voltage Transmission Lines

These lines carry large amounts of electricity. They rarely fail but must be repaired first.



2. Distribution Substations

Crews inspect substations, which can serve hundreds or thousands of people.



3. Main Distribution Lines

Main lines serve essential facilities like hospitals and larger communities.



4. Individual Homes and Businesses

After main line repairs are complete, we repair lines that serve individual homes and businesses.

The Clay Electric Foundation Board of Directors approved

\$187,600 IN GRANTS

during its May & June meetings.

Early Learning Coalition of North Florida (Baker, Clay, Putnam counties) \$15,000

The Early Learning Coalition serves parents, caregivers and educators of children ages birth to pre-kindergarten by managing and evaluating early child care and early education programs through a quality school readiness delivery system in Baker, Bradford, Clay, Nassau, Putnam and St. Johns counties. Funds from the grant will be used to support the themed literacy program.

Santa Fe College Foundation (Alachua, Bradford counties) \$15,000

The Santa Fe College Foundation inspires, cultivates and assists private donors to enrich Santa Fe College students and the community through scholarships, program enhancements, and facilities support. Grant funds will support the Veterans Bridge Scholarship to help veterans transition from the military to school.

Liz McGrath Circle, Inc. (Marion County) \$9,000

The Liz McGrath Circle is a volunteer group dedicated to helping the people and children of the rural community of Hog Valley. Grant funds will be applied to repairs to the group's thrift store building.

Veterans Helping Veterans, Inc. (All counties) \$10,000

Veterans Helping Veterans is a not-for-profit organization serving veterans and their families. Grant funds will support the mobile veteran outreach program.

Melrose Volunteer Fire Department (Alachua, Bradford, Clay, Putnam counties) \$15,000

The Melrose Volunteer Fire Department serves surrounding counties for fire protection and medical responders in emergencies. Grant funds will be applied to the purchase of new airbags for the engines.

Wheelchairs 4 Kids (All counties) \$15,000

Wheelchairs 4 Kids is a nonprofit organization dedicated to improving the lives of children with physical disabilities by providing wheelchairs, home and vehicle modifications, and other assistive equipment at no charge. Grant funds will support the Let's Roll program.

Haisley Lynch American Legion Post 16 (Alachua County) \$5,000

The American Legion's mission is to enhance the well-being of America's veterans, their families, the military, and their communities

by their devotion to mutual helpfulness. Funds from the grant will support the Service Beyond Enlistment program.

Go Bags for Homeless Children in Columbia County (Columbia County) \$2,500

Go Bags for Homeless Children in Lake City is an all-volunteer organization that annually provides bags of basic personal items free of charge to homeless children. Grant funds will be used to supply the go bags.

Palatka Police Athletic League (Putnam County) \$10,500

The Palatka Police Athletic League provides opportunities for youths to build leadership skills, trusting relationships, positive attitudes and life skills through mentor opportunities. Grant funds will support the summer camp program.

Palatka Band Alliance (Putnam County) \$7,000

The Palatka Band Alliance supports the arts education program at Palatka Jr/Sr High School. Funds from the grant will be applied to the purchase of instruments for the marching band.

Sleep in Heavenly Peace Lake City Chapter (Columbia County) \$2,500

Sleep in Heavenly Peace is a group of volunteers dedicated to building, assembling and delivering top-notch bunk beds to children and families in need. Grant funds will be applied to the purchase of supplies and materials to provide twin beds for local children.

Mercy Support Services (Clay County) \$10,000

Mercy Support Services serves the people of Clay County who are circumstantially in need by providing services that guide them to self-sufficiency. A non-profit organization, Mercy works collaboratively to provide "a hand up, not a hand out" to families and individuals in need. Funds from the grant will be applied to renovations to a quadraplex of apartments to be used as additional housing for the group's self-sufficiency programs.

Camp Boggy Creek (All counties) \$10,000

Camp Boggy Creek, located in Eustis, was founded in 1996 by Paul Newman and General H. Norman Schwarzkopf to make it possible for children with serious illnesses to enjoy a camp experience in a safe, medically-sound environment. Funds from the grant will be used to send four campers to the camp's summer sessions.

Clay County Archives (Clay County) \$5,000

The Clay County Archives preserves records and artifacts related to Clay County history, ensures public access to these items, and promotes programs and provides resources that increase public awareness and appreciation

for Clay County. Grant funds will be applied to the installation of an official state historic site marker to identify the Branan Field Outlying Landing Field that served as an early training ground for the Blue Angels.

Safe to Hope (Putnam County) \$3,000

Safe to Hope, based in Satsuma, is a non-profit ministry that combines law enforcement experience with education and hospitality in finding Biblical hope for child sexual abuse issues. Funds from the grant will be used for property improvements for future programs.

Grace Anglican Church (Clay County) \$1,500

Grace Anglican Church in Middleburg participates in Soul in the City, a week-long missional summer camp that empowers junior high and high school students to work at various non-profits in the community. Funds from the grant will pay for student scholarships and meals

Christian Service Center of Columbia County (Columbia County) \$15,000

The Christian Service Center of Columbia County is a nonprofit serving Columbia County since 1984. The scope of assistance provided includes food, clothing, utility bills, gas assistance, bus tickets, emergency lodging and prescription assistance to about 10,000 clients per year. The grant funds will be used for the Christian Service Center's Client Assistance Program to help residents with utility bills and food assistance.

LEEF (All counties) \$6,600

The League of Environmental Educators in Florida (LEEF) is the professional organization for environmental education in Florida- advancing environmental literacy and promoting stewardship. Funds from the grant will provide professional development training for teachers and support student-led programs.

The Way Free Medical Clinic (Clay County) \$20,000

The Way Free Medical Clinic, Inc. is committed to improving access to health care by providing free medical services for uninsured residents. Funds will support the Women's Care Program by providing expanded medical care services.

The Salvation Army of Clay County (Clay County) \$10,000

The Salvation Army is an international organization that provides emergency assistance in times of crisis. Grant funds will help to send 48 children to summer camp at Camp Keystone.

Scripture

Let us not lose heart in doing good, for in due time we will reap if we do not grow weary. **Galatians 6:9**



The Melrose Volunteer Fire Department received a grant from the Clay Electric Foundation.



Early Learning Coalition of North Florida received a \$15,000 grant.

For more information about the Clay Electric Foundation, or to apply for a grant, visit ClayElectric.com/operation-round

The Trading Post

Submit your Trading Post ad by sending it to Clay Electric, PO Box 308, Keystone Heights, FL 32656. For more Trading Post ads or to submit your ad online, visit ClayElectric.com.

80 USED PATIO stones ranging from 12", 16" & 18". Free to good home. 904-813-3632 Hughes
HARLEY DAVIDSON motorcycle, Year 2020, under 600 miles, garage kept, new tires, \$4,000. Has been lowered. Helmet female. Med size, chaps, saddle bags too. 2021 Toyota Camry 4-door, very clean, \$26,500. 904-248-8003 Baker

FISHING & HUNTING 4 rifles, 5 shotguns. 18' Wellcraft w/115 HP Yamaha 140 hrs w/nearly new performance trailer, \$21,000. Air boat hull (fiberglass), 17' Aqua Sport 60 HP Evinrude, Magic Tilt trailer, \$1,900. Text pls 813-245-4946 Frezza
2 FUNERAL LOTS in Holly Hill-Garden of Roses II, Lot 1380: 3 & 4. \$2,000 obo. 904-514-7211 Pipkins

GLASS-TOP TABLE, counter ht \$100. Ashley Furniture Barstools (2) \$50/both. Table lamps \$5ea. Coffee table w/2 matching end tables \$75/set. Cash only, Middleburg. 813-505-6454 Townsend

1964 CHEVELLE, True Super Sport. 2009 Frame Off restoration, HP 400 CI SBC, bored .030 over, (406 CI), full roller engine, built to race, lots of details. Engine runs good but needs performance diagnosis, dyno tune, valve lash adjust, repairs. Incl build/restoration photos/documentation & NEW QFT 750 Carburetor Overhaul Kit. Clear Florida title. Sold AS IS, WHERE IS. Appt only, call after noon. Serious buyers only. \$43,000. 904-333-8142 Arthur

MOTORHOME/TRUCK TIRES Hercules 275/70R 22.5 tires less than 2,000 miles. There are 5 tires all like brand new, \$1,250. 352-494-9247 Hogle

85 YARN (crochet) dolls, many from cartoons/movies (Wizard of Oz, Peanuts, etc.). Also animals & marine dolls, priced to sell. Brand new lg girl's bicycle, green/white, \$75. Child's wood benches,

\$21 ea. Seldom used lg Weed Eater, \$35. Silver Springs (in Forest). Text any time. 727-946-1627 Reale

TOOLS: AIR nailer; biscuit cutter w/cutting bit for router; Craftsman Router; DeWalt Air nailer; Stanley Chisel set; DeWalt "drill; Craftsman ½-inch drill; Craftsman Sabre saw w/4 new packs of blades; Craftsman 8" Dado set never used; Craftsman orbital hand sander; Drill set w/assorted drills; Sheet metal pliers; Fly cutter; Hole saw set; 25" tape measure self-locking; Propane solder set; Craftsman adjustable saw supports; WEN 8" grinder used twice w/2 extra grinding wheels; Porter Cable Saws-All Craftsman orbital Sander; Drill Dr. Drill Sharpener; Craftsman Variable speed 16" Scroll Saw; Craftsman Tool Box full set-3/8 & ½ sockets, Combo wrenches, adapters, swivels. Adj wrenches, 100" Tape & a lot more. Must sell complete. Make offer. Percentage will go to Veterans Group. 904-291-5081 Surman
INVERSION TABLE by Body Sculptur International Ltd. Max wt limit 300 lb, table comes assembled, \$50. Exercise cycle Pro-Form GT 30 EXG stable riding bike, \$100. 352-759-2730 Fuller
Colt .22 LR Wyoming Jubilee: 1964-1965 Colt Single Action Six .22 LR, \$700 cash/firm. 386-684-6928 Blanton

14' COBRA Tourer Kayak. Paddles, seat cushions (all extras) go w/kayak. Has rutter for steering. Good cond. \$700. 904-382-4239 Yeager

ALUMINUM EXTRUSIONS screenroom: Brand new 1x2-24 bronze/brown aluminum receiver channel 5pcs \$1/ft; Brand new 2x2-26 bronze/brown structural channel 1 pc \$2/ft. \$125 takes all. 954-461-7213 Novak

MOTORIZED WHEELCHAIR new cond, hardly used. Comes w/battery & charger, \$550. Elizabeth Taylor Barbie Father of the Bride collector's item. NIB. Part of estate. \$110. Shipping additional. pyodice@aol.com 727-278-9573 Yodice

2019 HONDA Talon 1000X Very fast, factory machine. 32" tires, bead-locks, winch, snorkel, light bar. Never been in mud. 137 hrs/1200ish miles. Garage kept. \$20,000 obo. Hawthorne. Paid delivery avail. 863-557-9072 Baker

1994 GRADY White: 30' absolute length, Gulfstream 23' Tournament Fisher. 2006 Yamaha



Asian Chicken Salad

Ingredients:

- 2 cups cooked boneless skinless chicken thighs cut into bite-sized pieces
- 4 cups cabbage, shredded
- 1 cup mushrooms, sliced
- 2 tablespoons cilantro, chopped
- 1 cucumber, sliced
- 3 green onions sliced thin
- 1 orange or tangerine, sliced
- Seasame dressing

Instructions:

Combine chicken, cabbage, mushrooms, cucumber, cilantro and dressing into a large bowl and mix thoroughly. Top with the green onions and orange slices (or tangerine). Add black pepper to taste.



CLAY ELECTRIC BOARD OF TRUSTEES

Meets at noon Thursday,
July 27, Thursday, Aug. 24
and Thursday, Sept. 28 in
Keystone Heights

Karen Hastings - President
Citra - District 9
Kelley Smith - Vice President
Palatka - District 2
Dewitt Hersey - Secretary
Starke - District 5
Jo Ann Smith - Treasurer
Micanopy - District 8
Carl Malphurs - Trustee
Alachua - District 4
Cindy Loose - Trustee
Keystone Heights - District 1
Susan Reeves - Trustee
Hawthorne - District 3
Jimmy Wilson - Trustee
Middleburg - District 6
John Whitehead - Trustee
Lake Butler - District 7

Ricky Davis
General Manager & CEO

EXECUTIVE STAFF

Bryan Gunter
Chief Operating Officer
Chris Bryan
Chief Engineer
Mark Maxwell
Chief Financial Officer
Derick Thomas
Chief Public Relations Officer
Justin Williams
Chief Officer of Corporate Services
and Human Resources
Brent Richardson
Chief Information Officer
Cheryl Rogers
Chief Audit Officer

DISTRICT MANAGERS

Troy Adams
Gainesville & Lake City
Justin Williams
Keystone Heights
Andy Chaff
Orange Park
Derek Hembree
Palatka & Salt Springs

COMMUNICATIONS

Kathy Richardson
Manager of Communications



Clay Electric Cooperative, Inc.

A Touchstone Energy® Cooperative

Motor F-250 Bought New, 2008 Load Master
Trailer: Custom Built. \$20,000 for boat, motor &
trailer. Black Creek 904-704-4919 Reeve
TURKEY FRYER w/propane tank: The Big Easy®
Oil-less Turkey Fryer. Fry whole turkeys/chicken/
roasts up to 16 lbs. TRU-Infrared™ tech. Hwy 301 &
SR 26. \$49. 352-231-4909 Johnson

SUN 21 SPEED recumbent bike w/bag. Additional
bike & bike rack for auto also avail. Needs cleanup
& new owner. \$450 Frank 386-288-6660 Walter
PORTABLE GRAND Yamaha keyboard model YPG-

235. Like new, rarely used. Comes w/stand, bench,
& owner's manual. \$150. 386-853-0456 Casto
PRIDE JAZZY Select Mobility Scooter w/Lift,
\$1,000. 904-964-5695 Browning
IRISH HUNT Terrier Puppies: similar to Jack Rus-
sell but more calm. Adult wt under 25 lbs. Smooth
coat black/tan. Breed standard at Nationalken-
nelclub.com, \$1,200. 352-494-0970 Kearley
CEMETERY PLOT: Premium single plot, Unit
28, Lot 1, Space B1 @ Riverside Memorial Park,
7242 Normandy Blvd, Jax 32205. Call/email Dave
904-327-3766/lutmand@hotmail.com. No text.
Lutman

BLACK LEATHER motorcycle jacket w/zip out
liner. Woman's size MED. New never worn. Still has
price tag. Mfr is First Classic Leather, \$100. Men's
size 11 Harley Davidson black motorcycle boots,
\$25. 904-403-5872 Rowe

18' RV 2005 Four Winds \$21,500. Single slideout,
generator, gas stove, convection mw, elec/gas
fridge; 1 full length & 3 window canopies. Inside/
outside storage, TV, DVD, front window tint, Flex-
Armor lifetime roof (transferable), new batteries.
Lv msg 904-463-4682 Spengler

ANTIQUE CHINA Cabinet, Book Cabinet Exc Cond,
\$300 obo. 352-475-9542 Krug

HP DESKJET 3630 all-in-one printer good cond,
just needs ink. A nice compact unit, \$65 obo.
Computer screen in good cond, went to laptop,
\$15 obo. Oster 8 speed blender, NIB, \$20. Col-
lectible Duck Club Silver Quartz Pocket Watch, 2
New never worn Timex blue face quartz man's
watches w/date. 1 slightly worn Timex men's blue
face w/date quartz watch in good cond. 1 new
(long) man's wristband in box. \$75 obo. Kirby Elite
vacuum sweeper w/every possible attachment +
shampoo attachment. Used very little, \$350 obo.
Please text. 904-282-6814 Mester

SPODE CHINA set, Christmas tree, complete set.
Never used. Open to negotiation, reasonable
request. Lv msg 904-269-5854 Lessig

MATCHING LT. beige leather recliners. Very good
cond. \$275 ea., both/\$425. 904-318-6305 Butler
SERGER SEWING machine by White. Overlock
machine in exc cond. Instruction book, threads,
carry case. \$100. 352-234-7276 Brock

NEW FIRESTONE Destination 265-7pr-16, never
mounted, \$100. 2011 Linnai, side by side, \$3,000
obo. 1 set of guide on for boat trailer, 40" tall, \$80.
Several anchors, different sizes, \$5-\$50. Reloading
Press w/357-308-270, 30-06 dies w/some brass,
\$150. 114HP Tecumsa new starter, \$50. Motor
stand, \$75. 2.5 HP 40s model Elgin motor, \$250
obo. Lv msg 386-659-1621 Nail

BURRIS ELIMINATOR III scope 4-16x50. Shot
5x on rifle. Paid \$1,500, will take \$1,000. Custom
built AR15 w/custom wayle .223 ss barrel, only
shot about 20x \$1,250. Browning BAR 308 Hog
Stalker, ltd edition rifle, bull barrel, very collectible,
scope does not go w/rifle, \$2,250. Barnett
crossbow 375fps w/all extras & hard case, \$400. 2
Dish & Winegard satellite receivers for RV/tailgat-
ing, \$200 ea. Pro Form treadmill, used very little,

\$100. 352-267-1145 Ponteaux

WILSON GOLF bag w/9 irons, 4 woods + golf
balls, \$65. 904-635-8925 Barber

SHOP EQUIPMENT - Free, Wood Master wood-
working multi-tool, needs some work.

Must pick up. Central Pneumatic 110 lb abrasive
blaster w/soda blast conversion kit. Never used,
\$100. Vertical Blasting Cabinet, never used, incl
abrasive material, \$100. Lv msg 386-496-1299
King

PLANTS: Viburnum 3 gal \$12.50, 1 gal \$5/
min. 5. Golden Rain trees 3 gal \$15. Fast growing
beautiful trees. 352-591-1374 Shaffer

GI M1 .30 caliber Carbine complete w/sling &
oiler, \$1,050. Purchaser will have to do back-
ground check @ my FFL. 386-871-7063 Berry
NEW 20' HD Equipment/Car Trailer Brand New,
20' w/rear dovetail, ramps, 5200# axels w/electric
brakes on both axels. New spare. \$4,800. 386-623-
4597 Miller

MEDICAL LIFT recliner. Electric. Dk Blue comfy
fabric. Will lift to standing or lay flat position.
Very good cond. Used only a short time. \$300.
904-318-6305 Butler

MODEL SAILING ships, incl Coast Guard Eagle. Lv
msg 352-759-2730 Fuller

120' x 120' CANAL frontage that takes you mi-
nutes to the St. Johns River. 285 Tarpon Blvd Palatka
\$110,000. Text/call 321-689-6787 Pugh

2011 KZ SPREE Travel Trailer 28' w/queen bed
slide out. Kitchen table slides out and converts to
a bed. Twin pull down bed, electric awning. Uses
gas or electric. AC, shower & toilet, new kitchen
faucet. 4-burner gas stove w/oven. Clear title. Salt
Springs. \$18,000. Universal Rider Leather motor-
cycle jacket, Men's 42, used 4x, \$400. 14 kt yellow
gold engagement ring 1.00 tcw, no scratches /
damage, \$4,000. 14 kt yellow gold wedding band
.75 tcw. No scratches/damage. \$1,400. Rings:
cash/cashier's check, must be verified prior to
delivery. Meet in Ocala. 352-239-5168 Lang
2012 FORD FOCUS SLE 5-door, 70,000 miles+
exc cond, \$6,500. Fleming Island. 904-545-4215
Caddell

STATIONARY EXERCISE bike, Stamina Products
EMR Series. Elite total body exercise cycle. \$200.
352-234-7276 Brock

ROCKET DIVE fins, scuba tanks, trick slalom water
ski, Ron Jon surf & boogie boards, 2019 Yamaha
4-stroke outboard motor, 19' performance boat
trailer, lots more items, call for info. 813-245-4946
Frezza

FRIGIDAIRE WASHER & dryer runs good,
Manuals incl. Photos via text/email. \$125 ea.
386-288-8827 Cistaro

JD TRACTOR 100 series lawn mower (have
manual). Purchased 2016, used 3 yrs. Has tag-a-
long trailer, \$500. 386-466-4885 Wilson

HOLLY HILL Cemetery - double depth Lawn Crypt.
Devotion area of cemetery Plot 1E deed in hand,
\$5,500. 904-635-1250 Morgan

CHICAGO PORTABLE generator like new, electric/
pull start, 8" wheels, 6500 rated watts/7000 max
watts, \$250 cash firm. Call Andy 904-576-0593,

904-576-0526 or 904-272-3845 Harrell

2006 JAYCO JAY flight tow behind camper sleeps
4-6, like new, less than 1,000 miles, has full bath
stove frig/freezer AC/heat mw surround sound
AM-FM radio CD & DVD player & TV, dual axle &
4-wheel brakes, \$7,000. 352-316-1315 Franklin
ETHAN ALLEN dining room set. Table incl 4 chairs
& 2 captain's chairs & lighted 2-pc hutch. Like
new, can be purchased together or separately.
\$2,000. 904-505-4519 Caso

BEACH MASTER women's bike \$50. Amana 30"
electric white range \$50. White Magic Chef over
range mw, \$20. Folding ladder 8'-16', \$60. Power
XL fryer \$25. Antique sewing table \$50. Antique
oak office chair \$40. Professional wine bottle
corker \$30. Eagle Harbor text Russ 904-563-9097
Kamradt

32" VIZIO flat screen TV, exc cond, works fine, \$45.
Badger kitchen sink garbage disposal, great cond,
works fine, Model #5 1/2 HP w/all sink connections,
\$15. Marine artifact old-time script Chris Craft
logo on highly varnished lg mahogany plank,
\$150. Ken 904-602-5098 Moran

FHC BACKHOE, used approx. 10x, still mounted
on tractor, \$4,500. Rebuilt 6-spd trans {manual}
GM w/clutch assembly T bearing Slave, master
cyl. & flex plate, \$3,700. Rebu. 4L60E automatic
trans. for 1994 G/M Camaro & Firebird, \$1,500.
904-282-8907 Smith

TOYOTA FLOOR mats. Front and rear black High-
lander rubber floor mats. Fits model year 2012
thru 2018. Good condition. Protects carpet from
rain, mud and other elements. Photos on request.
\$40. rwdjbc@gmail.com. 904-625-7863 Coleman
NEW 8" DEEP turbine well pump, 7 stages with
130 feet of new stainless drive rods. Both still in
original shipping crates. Valued around \$25,000.
Asking \$6,500, OBO. johnnami25@gmail.com.
305-401-7500 Albrecht

2023 SATURN INFLATABLE boat, 18-feet with
aluminum door. Motor not included. Holds seven
people. Will take a 50 HP motor. \$1,000. 2023
Suzuki 25 HP, 16-foot boat. Only 10 hours on it.
Tiller, power, tilt, push start. Trailer is like-new
condition. Located in Salt Springs. 954-913-6620
Gallo

BAND SHOES BLK, 6 1/2 mens, 8 1/2 womens.
\$20. Mens scrubs tall, PD. \$90, \$40. Daisy
smock, Cub Scouts shirt size 8, \$5 each. 386-649-
5320 Cowles

HENRY GOLDEN Boy .22 LR. In like-new condi-
tion. In original box. Retail list \$905, used average
\$595. Selling for \$495. 239-398-9135 Mason
NORINCO SKS, 1 paratrooper model, 1 standard.
Excellent condition. \$1,550. 305-903-8806
Herbster

MODEL SAILING ships. I have three, one of which
is the Coast Guard Eagle. Please call, leave mes-
sage 352-759-2730 Astor