

GenerLink: Safely connect home to generator in minutes

Clay Electric's mission is to provide you, our members, with safe and reliable energy in your homes. Unfortunately, Mother Nature can't be controlled and severe weather — especially during the storm season — can cause service interruptions.

The GenerLink emergency transfer switch is a fast, safe and convenient way for you to connect a portable generator into your home's electric system. The GenerLink switch is installed behind your electric meter with no wiring required.

GenerLink detects when the generator is running and will automatically disconnect from Clay Electric's distribution system, eliminating a dangerous back-feed. You'll be able to operate any appliance up to the capacity of the generator by use of your home's breaker panel.

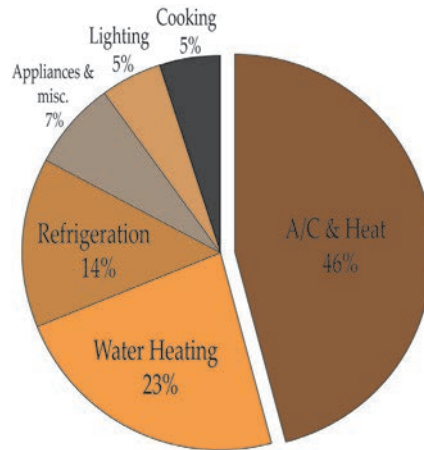
The GenerLink switch is available in 40-amp models for single-phase service with a 200-amp or smaller meter base. You will need to know what plug type your generator has to ensure the proper cord is provided.

To request a GenerLink switch, contact us at 1-800-224-4917. For more information including frequently asked questions and to find a list of compatible generators, head to ClayElectric.com/generlink.



Continued from front

When determining whether to purchase a smart thermostat, you should consider that your home's HVAC system probably uses more energy than any other area of your home. It's likely that A/C and heating alone take up nearly half of your energy bill.



Avg. Florida residential power bill

Smart thermostats are available at retailers, hardware stores and popular E-commerce sites. Before you buy, make sure the thermostat is Energy Star certified.

Confused about higher bill? Look at your usage graph

Temperatures in the summer months have been sweltering. Your cooperative's previous summer peak demand of 797 megawatts was set in June of last year, and that number was exceeded **three times** in July, peaking at a new record of 813 megawatts.

If you have questions about why your bill is higher, the usage graph on the front of your bill is the place to look. It shows your billed energy usage relative to the temperature outside, as well as historical energy usage data so you can compare to the previous month or year. You will also see if your current statement's billing period has more days than the previous month, which would cause your balance to be higher.

The Clay Electric Cooperative, Inc. _____

Power Line

September 2023

Save energy & money on your bill with a smart thermostat

Having a smart or Wi-Fi-enabled thermostat can really pay off, not only in the hot summer months, but also as we transition to the fall and winter months and temperatures take a turn.

Often, the thermostats pay for themselves in your savings. A study by the Environmental Protection Agency that gathered real-world data found smart thermostats meeting the Energy Star criteria saved users an average of 8 percent.



The benefit to a smart thermostat is that they turn off the heat and the air conditioning more often. Some thermostats do this with motion sensors or by checking the location of your phone. When the thermostat senses that you're away, it turns up the air in the summer, and it turns down the heat in the winter.

Another plus: Smart thermostats help you set up a cooling or heating schedule, which overlaps with the data it receives from when you're at home or away. And even if you're not someone who uses all of the scheduling features, another advantage is if you leave home for a long trip away and forget to set your thermostat, you can still do it from your smartphone.

Continued on back panel

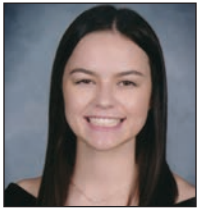
28 students awarded scholarships

Clay Electric has awarded \$2,000 scholarships to 28 high school seniors (Class of 2023) whose primary residences are served by the co-op.

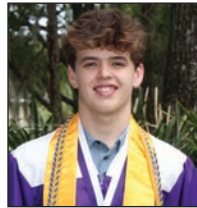
The recipients of the scholarships were determined by an outside panel of judges based on academic achievements, an essay, community and school activities, and letters of recommendation. More than 170 scholarship applications were received.

The scholarship recipients (pictured if photo was provided) are: **Abby Boone** (Sante Fe High School); **Evan Scott Crook** (Clay High School); **Jarrett Darus** (Chiefland Middle High School); **Rachel Lee Dougherty** (Fort White High School); **Cormack Davis** (Gainesville High School); **Gavin Eaton** (The Villages Charter School); **Reagan Elia** (Orange Park High School); **Kaitlyn Eubanks** (P.K. Yonge Developmental Research School); **Tanner Griffin** (homeschooled);

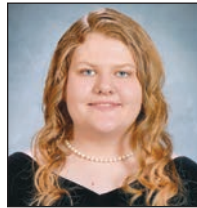
Seth Thomas Grubb (Columbia High School); **Kate Hickey** (Oakleaf High School); **Candace Jackson** (Keystone Heights High School); **Hayden Knight** (Bradford High School); **Bayan Mahmoodi** (Fleming Island High School); **Aspyn Martin** (Middleburg High School); **Brian McInnis** (Bishop John J. Snyder High School); **Emma Meade** (Newberry High School); **Parth Patel** (Stanton College Preparatory School); **Alicia Perez-Lugo** (Crescent City Jr.-Sr. High School); **Reagan E. Robinson** (Union County High School); **Madeline Rotenberry** (QI Roberts Jr.-Sr. High School); **Joseph Salazar** (Ridgeview High School); **Juliana Sweet** (Lake Weir High School); **Mikayla Taylor** (T. Dewitt Taylor Middle-High School); **Sophia Vernon** (Buchholz High School); **Noel Walters** (Eastside High School); **Brady David Weaver** (Palatka High School); **Brandon Lopez Wu** (St. Johns Classical Academy).



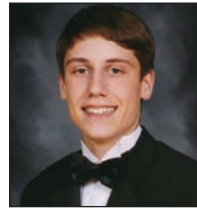
Boone



Davis



Dougherty



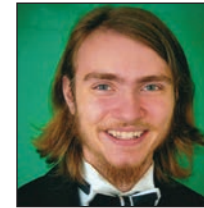
Eaton



Elia



Eubanks



Griffin



Hickey



Jackson



Knight



Mahmoodi



Martin



McInnis



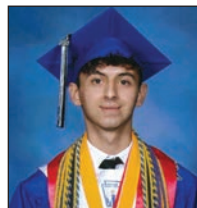
Patel



Robinson



Rottenberry



Salazar



Taylor



Walters



Weaver



Lopez Wu