

## Notification of program for those dependent on electric-powered support equipment

Members participating in the co-op's Medically Essential Service Program are granted two important benefits: (1) The co-op will provide the participant a written or verbal notification of a planned power outage; and (2) If a participant's account becomes delinquent, the co-op will attempt to notify the customer by phone or in the field, personal contact or with written notification at the residence 24 hours prior to disconnecting service.

Participants must be aware that Clay Electric does not provide preferential treatment in restoring power for those participating in the program and cannot guarantee uninterrupted service. Participants of the program are responsible for any backup equipment or power supply and a planned course of action during power outages. Also, participants are not exempt from paying their electric bills as established by other policies and procedures.

Requirements for participating in the program include the completion of a physician's certification by a Florida licensed physician. The certification must be renewed annually.

Members interested in this program should contact their local district office.

Power Line is an informational publication of Clay Electric Cooperative, Inc. It is distributed monthly with members' billing statements. If you have questions or comments about the Power Line publication, contact Editor Kathy Richardson at P. O. Box 308, Keystone Heights, FL 32656; e-mail: KRichardson@clayelectric.com.

Clay Electric also publishes the Kilowatt six times a year (January, March, May, July, September and November). The Kilowatt is the official voice of Clay Electric and has been published continuously since 1948 as an informational and educational service for co-op members.

Clay Electric's website (<http://www.clayelectric.com>) offers online services such as payments, and information about the co-op's programs and services. Members can also write their own ads online to be published on the website's Trading Post. To enter your ad on the Trading Post, you must use your Clay Electric customer number which is printed on your electric bill statement.

Clay Electric's Board of Trustees will meet on September 27 and October 30 beginning at 12:30 p.m. in Keystone Heights.

## News Notes

### Dwight Elder and Derryl Cone retire after decades of service

Dwight Elder and Derryl Cone retired from the cooperative with 44 and 27 years of service, respectively.

Dwight Elder was line supervisor for the Keystone Heights District.

Bill Thompson, director of district operations, said Elder was a trusted, conscientious leader. He said Clay Electric is a better company because of Elder's influence.

Derryl Cone was information resources manager in the Information and Communication Technology Department. During his 27-year tenure at the co-op, Cone obviously witnessed many remarkable advancements in the use of computers and technology. ICT Director Bruce McHollan praised Cone's management skills and foresight.

"He helped bring many new technologies to the co-op," McHollan said.



Elder



Cone

### Please: No signs on poles

*continued from cover*  
energized power line.

Clay Electric's poles also shouldn't be used to hang mailboxes, satellite dishes, basketball backstops or similar objects. These create climbing obstacles and safety hazards for our crews.

During storms or other major outages, obstacles attached to our poles make restoring power more difficult for crews, and can even delay the process.

Part of Clay Electric's mission is to provide safe electricity for our members and our employees. You can help us by not placing signs or any other item on our poles. Clay Electric appreciates your cooperation.

3040-20084

The Clay Electric Cooperative, Inc. \_\_\_\_\_

# Power Line

September 2012

## Don't post signs on our poles

Power line poles may seem like an inviting place to post your garage sale sign or a campaign sign promoting your favorite candidate. **Please don't.** It is not only illegal to do so, but such attachments also create dangerous conditions for utility line workers.

The National Electric Safety Code states that no items shall be attached to utility poles without approval from the owner/operator.

You may be thinking, "What's the harm of putting up one sign?" What you may not realize is that the nails, tacks and screws that remain in the pole after the sign has been discarded present a dangerous climbing hazard for utility linemen. Working on or near power lines is dangerous enough without added hazards. These sharp objects can tear the rubber gear that protects linemen from electrical shocks and burns. When working around lethal voltages, it only takes a pinhole in a protective rubber glove or sleeve to let in enough electricity to kill or seriously injure someone working on an



*continued on back panel*

 Clay Electric Cooperative, Inc. \_\_\_\_\_

A Triad Energy Cooperative 

## MEMBER SERVICES

### AUTOMATIC MONTHLY PAYMENT PLAN

Allows your monthly electric bill payment to be automatically deducted from your bank account on the due date. Sign up online ([clayelectric.com](http://clayelectric.com)) or call your local district office.

### ONLINE ACCOUNT INFORMATION

Visit the Clay Electric website ([clayelectric.com](http://clayelectric.com)) and access your account information:

- View your bill statement
- Make a one-time payment online
- View current charges
- View account balance
- View billing history
- View estimated meter reading dates
- Request emailed bill statements (Clay eBill)

**PROJECT SHARE** - Help others by designating a tax-deductible amount to be added to your electric bill or make a one-time donation.

**REMOTE METER READING (RMR)** - Enables a co-op meter reader to obtain the meter reading without entering the homeowner's property. The monthly charge is \$3.95.

**ENERGY SMART REBATE PROGRAM** - Offers rebates for members who install additional insulation in their homes, or who install a high efficiency heat pump or solar water heating system.

**ENERGY EFFICIENCY LOANS** - Available for the purpose of installing certain energy efficiency measures, including metal roofing and solar water heaters.

**SURGEBLASTER** - High quality surge protection equipment at a low monthly lease.

**LONG DISTANCE PHONE SERVICE** - Clay has contracted with TransWorld Network Corp. (TWN) to offer members competitively priced long distance phone service. Call (877) 877-CLAY (2529) for more information.

**PAYMENT STATIONS** - Clay has contracted with Fidelity Express to offer payment stations for paying your electric bill at various businesses in the co-op's service area. Fidelity Express charges \$1.50 for each transaction. A list of payment locations is available online ([clayelectric.com](http://clayelectric.com)) and at your local district office.

## 24 students awarded scholarships

Clay Electric Cooperative has awarded \$1,000 scholarships to 24 high school seniors (Class of 2012) whose primary residences are served by the co-op.

The recipients of the scholarships were determined by academic achievements, an essay, community and school activities, and letters of recommendation. More than 300 scholarship applications were received.

"We're glad we can help these fine young men and women with their college expenses," said Member & Public Relations Department Director Henry Barrow.

The scholarship recipients (pictured if photo was provided) are: Kristen Stone-Erdman of Palatka High School; Hannah Emerson of Santa Fe High School; Kathryn R. Palmer of Gainesville High School; Kimberlyn M. Elliott of Buchholz High School; Bryce McCarthy of Columbia High School; Emily Miller of Middleburg High School; Brittany Trowell of

Union County High School; Andrea Lombardi of Bishop John J. Snyder High School; Dawson Dunn of Vanguard High School; Andrew Wesley Eaves of Bradford High School; Carli Anan of Clay High School; Autumn Bland of Keystone Heights High School; Amanda N. Krpan of P.K. Yonge Developmental Research School; Amy Elizabeth Nicotra of Fleming Island High School; Pieter De Wolf of Eastside High School; LilyAnn N. Greenstein of Williston High School; Troy Daniel Malone of North Marion High School; Libby Conkey of Ridgeway High School; Mary Saltzgeber of Newberry High School; Shawn William Weidner of Oakleaf High School; Jacqueline Caro of Taylor High School; Charis Axtell of Orange Park High School; Jordan Daniel Harris of Gold Medal Honors Academy; and Brandon Rene Gonzalez of Fort White High School.



Palmer



Stone-Erdman



Emerson



Elliott



Anan



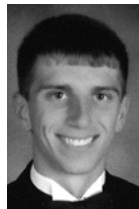
Bland



Krpan



Nicotra



McCarthy



Miller



Trowell



De Wolf



Greenstein



Malone



Conkey



Lombardi



Dunn



Eaves



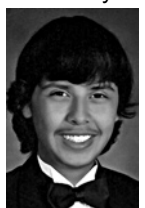
Saltzgeber



Caro



Axtell



Gonzalez