

Mission Statement

To provide members safe, reliable and affordable electricity with excellent customer service.

Vision Statement

To be the trusted energy provider that is prepared to embrace opportunities in a changing utility industry while improving the communities we serve.

Purpose Statement

To improve the quality of life of our members by delivering safe and reliable electricity while strengthening the communities we serve.

District Offices

Gainesville District Office

11530 NW 39th Ave.
Gainesville, FL 32606
(352) 372-8543

Keystone Heights District Office

P.O. Box 308; 65 SW Citrus Ave.
Keystone Heights, FL 32656
(352) 473-4917

Lake City District Office

1797 SW SR 47
Lake City, FL 32025
(386) 752-7447

Orange Park District Office

734 Blanding Blvd.
Orange Park, FL 32065
(904) 272-2456

Palatka District Office

300 N SR 19
Palatka, FL 32177
(386) 328-1432

Salt Springs District Office

P.O. Box 5500; 25180 E Hwy 316
Salt Springs, FL 32134
(352) 685-2111



Published June 2023 by the Member & Public Relations Department

All About Clay Electric

facts • services • statistics





What is Clay Electric?

Clay Electric Cooperative is an incorporated, member-owned, not-for-profit electric power supplier, democratically organized and controlled by those it serves. Formally organized in 1937, the co-op has traditionally been known for its excellent service. The co-op is also a Touchstone Energy cooperative — a national alliance of local, member-owned electric cooperatives committed to high standards of service.

Service Area

The service area stretches into 14 North Florida counties: Alachua, Baker, Bradford, Clay, Columbia, Flagler, Gilchrist, Lake, Levy, Marion, Putnam, Suwannee, Union and Volusia.

Power Supply

The co-op's power supply is provided by Seminole Electric Cooperative, a generation and transmission co-op owned by Clay Electric and eight other electric co-ops.

Seminole's primary resources include the Seminole Generating Station (SGS) in northeast Florida, the Richard J. Midulla Generating Station (MGS) in south central Florida, and Seminole's first "Cooperative Solar" facility, located adjacent to MGS.

SGS consists of two approximately 638-megawatt coal-fired generating units. Located just north of Palatka, SGS uses modern technology for

environmental protection, including more than \$530 million invested in environmental control equipment. In 2018, Seminole announced the removal of one of their two coal units from service in approximately five years. This unit will be replaced with new natural gas fired generation. Currently named the Seminole Combined Cycle Facility, the new natural gas plant is directly adjacent to the existing Seminole Generating Station site in Putnam County, Florida, and will have a generating capacity of 1,134 megawatts.

MGS, located in Hardee County, is an 870-megawatt facility that uses natural gas as its primary fuel. The station's 560-megawatt combined-cycle unit began commercial operation in 2002. Seminole added 310-megawatts of peaking capacity in 2006.

Located next to MGS, Cooperative Solar is a 2.2-megawatt solar array comprising more than 8,000 solar photovoltaic (PV) panels. In addition to Cooperative Solar, Seminole has contracted with Florida Renewable Partners, LLC to build new photovoltaic solar facilities across north Florida, which are expected to be commercially operational in 2024.

Capital Credits

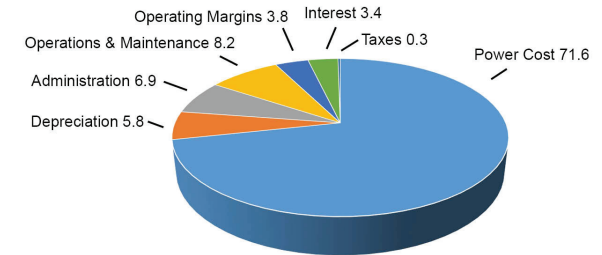
At the end of each year, after all expenses are paid, the margins are assigned to members' accounts. At a future date, when the financial condition of the cooperative permits, the margins (referred to as Capital Credits) are refunded. In January 2023, a \$12 million refund was declared for members who received electric service between 1993 and 2021.

Statistics

As of December 31, 2022

Services Billed	187,066
Annual Revenue	\$468 million
Total Assets.....	\$862 million
Annual Energy Sales.....	3.5 billion kWh

How Each Revenue Dollar Was Spent*



* December 31, 2022

** Some taxes are reflected as operations and maintenance expenses as recommended by utility accounting guidelines.

Communications

The *Kilowatt* — published 6 times annually

Power Line — published monthly

Website — ClayElectric.com

Member Services

- Auto Pay
- Budget Billing Plan
- Energy Efficiency Loans
- Energy Smart Rebates
- MyClayElectric web portal/mobile app
- Online Power Outage Map
- Paperless Billing
- Payment Stations
- Project Share
- PrePaid Program
- Surge Protection
- Third Party Notification

Board of Trustees

The service area is divided into nine trustee districts, with one member representing each district on the cooperative's board of trustees. Members of the board are elected by co-op members before the Annual Meeting. The 2024 Annual Meeting Gathering will be held Saturday, March 23.

Visit ClayElectric.com for more info.