

Kilowatt

The newsletter for members of Clay Electric Cooperative, Inc.

July 2024



Youth Tour

Inspiring scholars
since 1966

Be ready. We've planned for a busy hurricane season



Ricky Davis
General Manager

Kilowatt

Vol. 55, No. 4, July 2024 (USPS 783-900; ISSN 1087-4747) is published by the Member & Public Relations Department of Clay Electric Cooperative, Inc., Highway 100 West, Keystone Heights, FL, 32656. Subscription \$1 per year to co-op members. Periodicals postage paid at Keystone Heights, Fla. and at additional mailing offices.

Nick Jones, editor
njones@ClayElectric.com

Postmaster:
Send address changes to
Kilowatt
PO Box 308
Keystone Heights, FL 32656

On the cover:
Clay Electric's four Youth Tour to Washington recipients with Member Relations Representative Jordan Wade outside the Capitol.



Clay Electric crews work to restore power following Hurricane Idalia in September 2023.

If there's anything that stands out from last hurricane season that should raise everyone's eyebrows, it's the destruction that can be caused by just one storm.

The 2023 season ended with 20 named storms, seven of which were hurricanes. That's tied for the fourth-most active Atlantic hurricane season on record, with 2020 experiencing the greatest number of named cyclones (30 total).

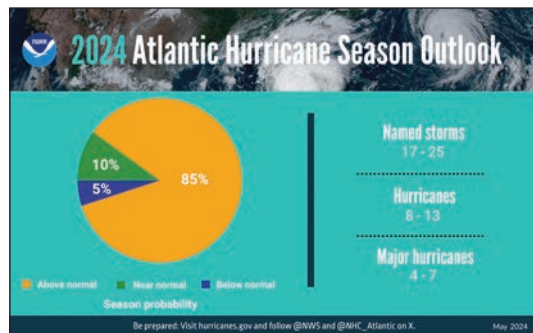
Perhaps there's one name in particular, though, that sticks out in your mind from the 2023 season — Idalia, and there's a good reason for that. Idalia was an unprecedented event as no major hurricanes before it had ever passed through the bay adjoining the Big Bend, and as it rushed ashore as a Category 3 storm, its winds were near 125 mph — more than enough to rip off roofs and split trees, or in some cases, power poles.

Again, this was all due to just one storm, and while there was time for those in its path to make arrangements, Idalia rapidly intensified in just 24 hours from Cat 1 to Cat 4 before making landfall as a strong Cat 3.

Don't make the mistake of waiting. It's just not worth it, and it's so easy to prepare. This season, NOAA is predicting above-normal activity, with 17 to 25 named storms, of which four to seven are expected to be major hurricanes — that's Category 3 or higher.

When severe weather strikes, our lineworkers take all the necessary precautions before they begin working on downed power lines. You and your family must do the same and prepare now for major storms and outages.

- Stock your pantry with a five-day supply of non-perishable food (canned goods, peanut butter, granola bars, instant coffee, water).



Infographic showing hurricane season probability and numbers of named storms predicted from NOAA. (Image credit: NOAA)

- Ensure you have a first aid kit and that it's stocked with pain relievers, bandages and other medical essentials, and make sure your prescriptions are current.
- Set aside basic items: Flashlights, batteries and a portable radio.

For a list of resources designed to help you before, during and after a storm, make sure you download Clay Electric's **2024 Hurricane Preparedness Guide** (scannable QR code on page 4), and of course, keep the **MyClayElectric app** handy for power restoration updates.

Remember, after a storm, stay away from downed power lines. If you encounter any while driving, turn around. Never drive near or over them as they might still be energized.

Power up savings with PrePaid

Switch to PrePaid and avoid paying another late fee.

Clay Electric's PrePaid program gives members the power to pay for electricity on their own schedule, starting with a minimum of \$50 for electric use. When the fund drops below \$25, a member will receive a text and/or email notification. Balances are shown via MyClayElectric, and payments can be made there or by phone.

Scan the QR code on the right to learn more, or sign up by calling your local Clay Electric office.





Students make lifelong memories, new friendships in Washington

Four scholars sponsored by Clay Electric have returned from a weeklong, once-in-a-lifetime trip to the nation's capital during the nation's Youth Week, but one student — Cayden Parker (second from left in photo directly above), who attends Santa Fe High School — is heading back this month.

That's because Parker was chosen to represent the state of Florida on the NRECA (National Rural Electric Cooperative Association) Youth Leadership Council (YLC). His return trip allows him to grasp a broader understanding of electric cooperatives and the energy industry, and he'll attend the YLC Conference.

On top of that, Parker will visit the NRECA's Annual Meeting next spring, where he'll deliver an address, specifically the speech he wrote for Youth Tour.

Clay Electric has proudly sponsored and helped inspire Florida scholars since 1966, when the co-op first implemented the Youth Tour program that allows students to visit Washington, D.C., where they visit many of our nation's landmarks and have the opportunity to chat candidly with lawmakers.

Some of Parker's favorite experiences include the Vietnam Veterans Memorial and the Potomac River boat cruise. He met and connected with many other students on the trip, some of whom he speaks with daily, he said.

"I learned that I can find something in common with almost anyone, and, just, start meaningful conversations," Parker said after his time in Washington. "Sometimes it can be intimidating to talk to large groups of people whom you've never met before, but Youth Tour accentuated that confidence in my social abilities."

Parker said he also learned he cares sincerely about people who show passion for a current or future career.

"When people show genuineness and a longing for a career or topic, it gives me motivation in knowing that people still want to be influential in their lives," he said. "I learned so much about myself on this trip, and I'm eternally grateful for the opportunity to be a part of it."

The program, which other co-ops across the country also participate in, started after Sen. Lyndon B. Johnson, D-Texas, addressed the NRECA's Annual Meeting in Chicago in 1957, where he declared, "If one thing comes out of this meeting, it will be sending youngsters to the national capital where they can actually see what the flag stands for and represents."

Congratulations to Parker and our other three Youth Tour recipients from this year — Anais Maldonado (Fort White High School), Gavin Miles (Q.I. Roberts Junior-Senior High School) and Nathan Arnold (Ridgeview High School).



Chief meteorologist: Follow 'real sources,' take season '1 storm at a time'



NOAA's satellite captured Hurricane Idalia approaching the western coast of Florida while Hurricane Franklin churned in the Atlantic Ocean on Aug. 29, 2023. (Image credit: NOAA)

Could there be as many as 25 named storms this hurricane season? It's a question Weather Authority Chief Meteorologist Richard Nunn has been getting a lot.

It's certainly possible, he said, given the most recorded named storms in a single season stands at 28 (2005). But there's also the other end of NOAA's 2024 Atlantic hurricane season outlook, which is 17 storms.

Here's what's known for sure: In 2023, there were 20 named storms and Major Hurricane Idalia was the only that made landfall in the U.S. But that one storm caused a storm surge inundation of 7 to 12 feet and widespread flooding in Florida.

"What we have similar to last year is that the ocean (in June) was already boiling," Nunn said. "Typically, when you have these very heated waters, you get tropical development faster, which results in storms in the Atlantic starting that righthand turn faster."

The other part of that is, El Niño — the climate pattern that brings warmer temperatures to the Pacific Ocean — is now out of the spotlight, and forecasters say that sets the stage for La Niña. While El Niño tends to create hostile upper-level winds that rip storms apart, La Niña does the opposite.

If it's anything like last year, Nunn said, the tropics will experience an active season, and the thing about that — our new "normal" is elevated compared to what history has shown due to the most recent years being so active. Last year was the fourth-most active on record.

Hurricane cone will look different

When something is swirling in the tropics, all eyes go to the forecast cone

— perhaps better known as the "cone of uncertainty" — which shrinks as a storm moves closer to its target.

Over the years, the cone has stayed pretty much the same, but this year, an experimental cone will be introduced in August that will act as a supplement.

"It's going to allow people to better understand what's coming," Nunn said. "What we typically see in the cone is the time, the date and the estimated power and wind speed. The new cone has all of the above, but it's also going to have more detail for the watches and warnings that are pending."

Storm surge and the SLOSH

Watches and warnings pertain to the categories of tropical storm-force winds, hurricane-force winds and storm surge risk, the latter of which is often the largest hazard for coastal regions, but the same applies for anyone living near a body of water.

"Water doesn't care. It's going to get where it needs to go, and it's going to take whatever along the way," Nunn said.

The chief meteorologist continues to be fascinated by the accuracy of the SLOSH (Sea, Lake and Overland Surges from Hurricanes) model, which was developed by the National Weather Service to estimate storm surge heights.

"The SLOSH model is phenomenal, and it continues to get better," Nunn said. "The storm surge is not just an annoyance, it is very dangerous because it could pull your car away and you along with it."

Damage starts at 40 mph

Of course, wind is always a factor with any storm, and with large gusts come the

Scan code with your smartphone to download the **2024 Hurricane Preparedness Guide**



likelihood of falling trees, limbs and other debris, which fuels the risk for outages.

"Let's say you have a storm come in with 100 mph winds, but at ground level you're somewhere between 40 to 60 mph and 100 is going to be the strongest of those gusts," Nunn said. "But damage starts at 40 mph."

Remember, the weakest maximum sustained wind speed for a hurricane is 74 mph. The weakest maximum sustained wind speed for a tropical storm is 39 mph.

Use 'real sources'

Of course, when it comes to who you can trust, the distinguished meteorologist stressed the importance of a reliable source.

"Get your information from real sources and not unverified social media accounts," Nunn said. "You're going to know our opinions, the national model data, the international model data and everything else."

Above all, Nunn said, don't get overwhelmed by the numbers. Families should set aside some essentials, have a plan and know their options.

"One storm at a time," Nunn said. "If you're situationally aware of your surroundings, if you know your evacuation zone — all of that is going to make living through another tropical season that much easier."

Richard Nunn is the chief meteorologist at WJXT in Jacksonville, and he's spent more than 25 years in the industry. Apart from being a forecaster extraordinaire, he's a gearhead, culinary expert and beer connoisseur.



We're boosting reliability with fiberglass crossarms

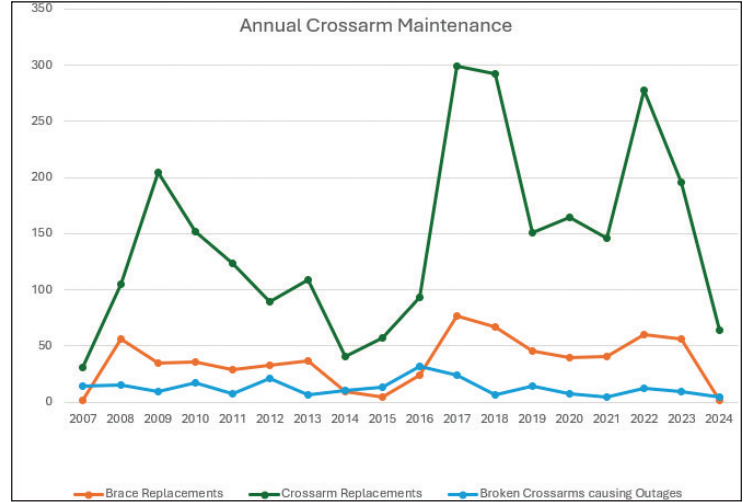
Before your cooperative makes a decision, we're always considering the impact it will have on you, our members. Recently, after much consideration, we made a choice to transition away from wood crossarms — the piece used to hold up power lines and other equipment — to fiberglass ones.

Back in 2009, your cooperative first decided to implement the change in applications requiring multiple wood crossarms to instead use a single fiberglass crossarm. The material cost alone made it an easy decision, as did a reduction in maintenance and outages, thus improving reliability. Clay Electric continued using wood for single crossarm applications.

Since then, we've kept an eye on the price of fiberglass crossarms vs. wood applications, and we've learned on average that we're replacing about 193 wood crossarms annually for maintenance or outage reasons, shown in the graph on the right.

Fast forward to last year, when your cooperative ran a new cost-benefit analysis, which revealed that while fiberglass crossarms are generally more expensive than wood, the price of wood crossarms since 2009 has been increasing explosively, much faster than fiberglass. As we learned the fiberglass crossarms were also greatly reducing our maintenance numbers, which in turn meant a reduction in outages, the decision became clearer.

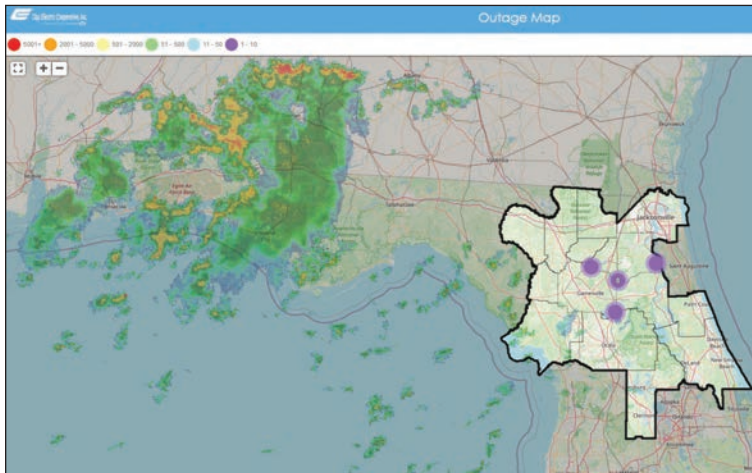
The last factor: the supply chain. The weathering treatment



used on wood crossarms was running in short supply, and the alternative would be experimenting with unproven treatments that might not have the same longevity.

So, in a nod toward our mission statement, Clay Electric this year decided to transition away from wood crossarms entirely in favor of fiberglass. The outcome for our members means more reliable and affordable electricity.

Check out our improved outage map



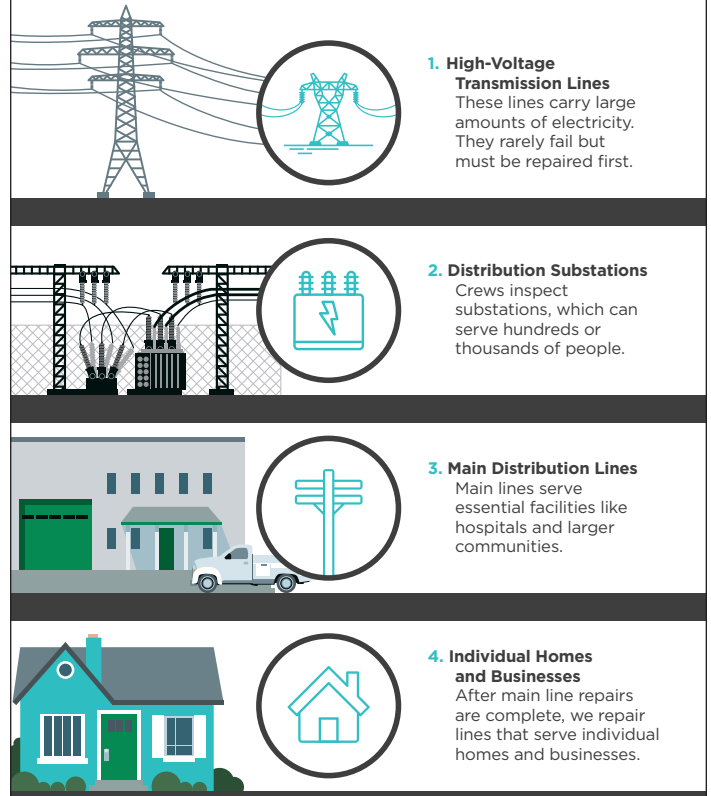
Your cooperative has rolled out a new, more user-friendly version of the outage map.

The new map is cloud-based, and you, our members, are now able to break down the outage map by either county or district. Additionally, you now have the option of toggling “Weather Overlay,” which shows the severity of showers or storms that could be rolling through your neighborhood.

Check it out by going into your free MyClayElectric app via your mobile device and selecting “Outage Map,” or head to clayelectric.outagemap.coop and add it to your bookmarks bar.

The Steps to Restoring Power

When a major outage occurs, our crews restore service to the greatest number of people in the shortest time possible - until everyone has power.



The Clay Electric Foundation Board of Directors approved

\$163,500 IN GRANTS

during its June and July meetings.

BASCA, Inc. \$10,000 (Clay County)

Focuses on helping people with intellectual and developmental disabilities achieve a higher quality of life and sense of belonging. Funds will be applied to the purchase of new vehicles for its transportation service.

Foundation for Florida Gateway College \$10,000 (Columbia County)

Exists solely to provide financial support for Florida Gateway College and the students it serves. Funds will be used to provide scholarships for tuition.

Service Dogs for Patriots \$10,000 (Alachua County)

Serves and supports veterans with post traumatic stress living in Central Florida by providing qualified dogs and/or service dog training. Funds will be used to provide service dog training to veteran/service dog teams.

Santa Fe College Foundation \$10,000 (Alachua County)

Inspires, cultivates and assists private donors to enrich Santa Fe College students and the community through scholarships, program enhancements and facilities support. Funds support the Veterans Bridge Scholarship to help veterans transition from the military to school.

Melrose Volunteer Fire Dept. \$15,000 (Alachua, Putnam counties)

Serves surrounding counties for fire protection and medical responders in emergencies. Funds will be applied to the building's kitchen renovation.

Compassionate Warriors, Inc. \$3,000 (Clay County)

Brings positive change to the community by embracing and assisting those facing crises with love, support, compassion and services. Funds will support the Angel Families program, which provides aftercare services for families affected by homicide.

Ace Mentor Program of Northeast Florida \$5,000 (Clay County)

Helps mentor high school students and inspires them to pursue careers in design and construction. Funds will be used to fund field trips, scholarships and/or technical training for Clay County students.

Pausing with God Ministries \$500 (Clay County)

Committed to fostering personal & professional growth in women and teen girls. Funds will help purchase supplies for programs.

College of Central Florida Foundation \$10,000 (Marion County)

Seeks to change lives through education by providing community awareness, advocacy and funding to the college. Funds will support the CF Patriot Fund, which assists students when unexpected financial emergencies occur.

Promised Land Family Ministries \$10,000 (Multiple counties)

Faith-based nonprofit in Lake Butler that seeks to develop youth into responsible members of society through programs that focus on agriculture and the outdoors. Funds will support a pavilion expansion.

Empowered of Central Florida DBA The Rock Program \$5,000 (Marion, Lake counties)

Serves over 10,000 middle and high school students with over 20 dedicated resource rooms fully stocked with items (food, clothing, hygiene, etc.) essential to student success. Funds will support the creation of a new resource room, or "Rock Room."

Woman's Club of Keystone Heights \$10,000 (Clay County)

A community service organization that supports its local area in various ways. The grant will help fund a new roof for the Woman's Club.

Rotarians for the Development of Youth, Inc. \$10,000 (Putnam County)

Committed to working with Milton and Judy Starnes to fulfill their dream of providing a nurturing home environment for foster children. Funding helps build homes for foster families and their children.

Cross Creek Volunteer Fire Dept. \$15,000 (Alachua, Bradford, Clay, Putnam counties)

Serves and protects approximately 4,000 residents who reside in the Cross Creek, Island Grove and Lochloosa communities. Funds support the purchase of a new apparatus that helps free people from crashed vehicles.



A \$20,000 grant was recently approved for Eldercare of Alachua County.

ISKON of Gainesville \$10,000 (Alachua County)

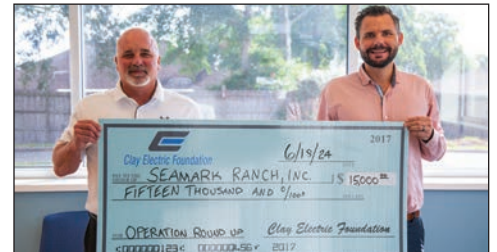
Provides spiritual care and also supports general well-being through various programs, especially food programs that fight food insecurity. Funds will help provide additional meals.

Columbia County Senior Services \$10,000 (Columbia County)

Assists senior adults by providing resources and services that support aging in place. Funding will be used to maintain the organization's vans that transport hundreds of seniors.

Marion County Children's Advocacy Center, Inc. \$20,000 (Marion County)

Identifies, develops and implements case management and treatment approaches for abused and neglected children. Funds will provide trauma therapy counseling sessions.



Seamark Ranch, Inc. recently received a \$15,000 grant from Clay Electric.



Operation Barnabas, a veterans organization, received a \$15,000 grant.



Catholic Charities' Lake City bureau was granted \$10,000 in funds this year.

Clay Electric Cooperative, Inc.

The Trading Post

Submit your Trading Post ad by sending it to Clay Electric, PO Box 308, Keystone Heights, FL 32656. For more Trading Post ads or to submit your ad online, visit ClayElectric.com.

DRAG RACE truck 83 5-15 cert 8.50 full custom chassis, 2,425 lbs, 800 HP. BBC Turbo 400 w/trans brake 9" Ford 4.56. Removable fiberglass front end, all aluminum interior. \$20,000. Lv msg 904-838-1222 Gnnan

CHROME STEPS for Toyota SR5 Tacoma fits yrs 2015-17. Small dent on rt front step, can be fixed. Reg price \$625, asking \$200. Middleburg. Harry 904-282-9405 Frangos

HYDRO FORCE Tropical Breeze 6-person inflatable party island, 6 cup holders, detachable sun shade, size 9x12.9. \$60. 386-916-2034 Scarselli

LG ADVERTISING lamp Schlitz Beer, 36" pretty girl holding up lightbulb socket, base lights up, \$150. Assorted books Zeppelins (some German), Hindenburg, airships, Lindbergh, \$40-\$200. Firm cardboard advert Sober Up drink pinup girl, \$150. No shipping. 904-272-1854 Simpson

BOBWHITE QUAIL eggs for hatching/eating. Starting at \$0.50. Shipping avail. 352-316-1644 Conerly

96 STINGRAY 698zp cuddy, good cond in storage sold as is no issues, no test rides w/HD trailer 23', \$3,600 obo. 454 v8 inboard bravo 2 merc outboard. 904-568-1110 Rowe

14' V HAUL boat w/trailer & 75h motor needs TLC \$3,000. New boat canopy w/cover \$80. Travel trailer in process of restoring it sleeps 4-6 \$8,000 OBF. Graver y zero turn mower, need some work \$180. Kubota tractor model LA723 series 31219 w/ bush hog, \$8,000; also have box blade \$800, 3-plow disc BF, walk behind plow \$400 OBF, engine stand \$80. 386-972-5374 Nelson

LITTER OF 9 Australian Shepherds, 7 females 2 males. Parents both registered. Puppies will have reg. papers, health cert. from vet. Will be 8 wks May 29. \$1,500 ea. \$300 deposited will hold selection. Margaret 904-245-9514 Powers

BONNEVILLE T100 motorcycle, like new, slightly over 1,000 miles, garage kept, black w/upgraded paint, \$5,500. Tracker 17' TWX w/75 hp Mercury motor, Bass boat exc cond. Black w/gray deck approx. 70 hrs on motor serviced properly, trailer & tires exc. cond., \$15,000. Will text pics. 352-459-96358 Larocque

4-H, FFA steers & heifers, Fancy Simmental x Angus, black polled, fully vaccinated, winning herd, many AI bred. \$1,700+. 386-365-6765 Robinson

NIB UNDER desk/car gun vault for pistols, \$130. New 32-pc screwdriver set w/lifetime warranty still sealed, \$20. Archery access. new bow sight & arrow rest, never opened, \$50. 2 pr sunshades NIB, polarized, very light & comfortable, \$15. New cap & 3 pr socks brown w/Realtree logo, all nice, \$15. 904-813-3010 Maddox

LAKE RENTAL: 2/2 lake front, 5 min from Keystone Clay Co-op, avail. weekly/monthly, \$1,500 monthly. 352-473-3818 Mattox

AQUASURE HARMONY 48K (fine) water softener w/salt bin, extra parts & manual. Good for moderate rust & hardness of water. Charged once, not used. \$350 obo. 352-473-4275 Steinkellner

3 PELICAN FISHING kayaks, 3 paddles & Magellan kayak stand, access. incl. (sunshade & sail), \$5,000 obo. 904-612-2950 Finn

4 PVC PATIO chairs, need cushions. Cream colored, \$60/all. Invacare Model # 50001VC hospital bed w/Solace by Invacare mattress & side rails, \$350. Bunn VPR series industrial coffee maker, 2 burner, never used, \$325. John Deere LX266 lawn mower, needs work, \$100. Solid wood queen sleigh headboard & footboard, \$75. Mobile home steps, metal rails w/3 steps, used, \$60. 904-424-9199 Urff

HD ROAD KING Custom (FLHRS), yellow, good cond, 2006, 7,500 miles, \$6,999 obo. HD Sportster XL883L, black, good cond, 2011, 4,350 miles, \$3,999 obo. Both run great, never any issues. Fort White area, call/txt for pics. 386-292-0708 Werner

BROWNING BAR Hog Stalker. In 308 very collectible due to ltd production. Comes w/all orig access., \$2,500. Hell cat RDP 9mm w/red dot sites, comes w/3 extra 17 rd mags, isw holster & factor access., \$900. 352-267-1145 Pouteaux

2006 HARLEY DAVIDSON Heritage Softail w/Stage 2 Screaming Eagle Pkg. 27,000 miles. 5K+ in HD access. 664 miles on new tires & service. Exc cond, \$7,000. 352-468-2363 McDaniel

LAMPS, CHAIRS, cabinets, linens, dishes, andirons, French Provincial round end tables, much more. 904-264-3788 Vanzant

LITTER OF 5 female Siberian husky puppies. Mother & father both registered. AKC ltd reg. paperwork, health cert. from vet, dewormed, shots. Will be 8 wks old 6/28. \$1,250 ea. \$350 nonrefundable deposit will reserve puppy. Heather 904-802-2901 Zamora

2020 LA-Z-BOY 2 leather power recliners w/chaise lounge. 2 consoles w/lighted cupholders. Exc cond. \$1,500. 904-514-4183 McCarroll

TRIDENT TRIKES Terrain Fat Tire recumbent trike, vg cond. Text for pics. \$750. 352-455-6853 Collins

JETSKI/BOAT lift-110v: sold our 3 person 681# jet ski. Lift in good cond. You uninstal from dock, \$790. Trailer dolly-600#, \$65. Janet 352-494-6118 Howard

2009 BASS TRACKER 175 Crappie 60HP 4ST Merc, Fish/Depth, motor guide trolling, new seats, 1 owner, used very little on Lake Griffin. \$10,000 obo. Tommy 352-745-1188 Raulerson

4 PRO COMP 1069-5165 rims 15x10, 5x4.5 bolt pattern, 3.625 backspace, aluminum. Must sell all 4 together. \$300 obo. Lv msg 352-685-8685 Clark

TOWNHOME \$194,500, 2 BR, 2.5 baths, 2 floors. 904-314-3058 Rivera

BILSTEIN SHOCKS 99-07 Chevy/GMC Z71 truck, \$200. STIHL Farm Boss chainsaw, \$100. STIHL tree saw, not running, \$100. STIHL weed cutter, \$100. 904-773-3403 Elam

TITAN ELECTRIC wheelchair, barely used, \$800 (purchased \$3,000). Interlachen. 386-336-6111 Raley

BLACK POWDER Muzzle Loader. .50 cal H&R Topper PLUS rifled 12 ga shotgun barrel PLUS Mod. choke smooth bore barrel. 3 guns in 1. Can even get a 30-06 barrel for it. \$300. 870-830-1441 Deren

Always be humble and gentle. Be patient with each other, making allowance for each other's faults because of your love.

Ephesians 4:2



CLAY ELECTRIC BOARD OF TRUSTEES

Meets at noon in Keystone Heights on Aug. 22, Sept. 26. and Oct. 24.

Kelley Smith - President
Palatka - District 2
Dewitt Hersey - Vice President
Starke - District 5
Jo Ann Smith - Secretary
Micanopy - District 8
John Whitehead - Treasure
Lake Butler - District 7
Cindy Loose - Trustee
Keystone Heights - District 1
Susan Reeves - Trustee
Hawthorne - District 3
Carl Malphurs - Trustee
Alachua - District 4
Jimmy Wilson - Trustee
Middleburg - District 6
Karen Hastings - Trustee
Citra - District 9

Ricky Davis
General Manager & CEO

EXECUTIVE STAFF

Bryan Gunter
Chief Operating Officer
Chris Bryan
Chief Engineer
Mark Maxwell
Chief Financial Officer
Derick Thomas
Chief Public Relations Officer
Justin Williams
Chief Officer of Corporate Services and Human Resources
Brent Richardson
Chief Information Officer
Cheryl Rogers
Chief Audit Officer

DISTRICT MANAGERS

Troy Adams
Gainesville & Lake City
Justin Williams
Keystone Heights
Andy Chaff
Orange Park
Derek Hembree
Palatka & Salt Springs

COMMUNICATIONS

Kathy Richardson
Manager of Communications



Clay Electric Cooperative, Inc.

A Touchstone Energy® Cooperative

14' ALUM FLAT-BOTTOM boat w/8 HP
Yamaha & trailer, \$2,000 firm. 904-703-0088
Gibson

HONDA GENERATOR, 2005 model EM6500SX,
6500 watt electric/pull start, \$550. norrisn@
att.net Norris

MOTORCYCLE HARLEY like-new handlebars,
\$30, back rest \$30, antique buck saw \$75,
Bostitch roofing gun & 11 coils nails, \$75,
Dewalt framing gun & oil, \$75, serger sewing
machine w/tape, \$50, 5 pr 80x63 red foam
back curtains, like new, \$100, air rifle \$200.
Ocklawaha. 352-289-4516 Kelly
TONS OF ammo, .410, 9mm, 40s&w, 22lr, 12
ga. buckshot. Txt for prices. 904-790-0615
Underwood

JOHN DEERE 790 2005 tractor w/60" Bush
Hog, 4WD. Good cond, maintained, new
battery & low hrs. Orig owner, kept under
cover. Topper & wts incl. \$8,500. Alachua.
954-398-1519 Beazley

ANTIQUÉ VEHICLES: 1971 Scout, new tires,
radiator, brakes, brake lines & more, \$5,500.
1986 Porsche, \$6,500. 304-288-9759 Krieg
12' JON BOAT & trailer & 3 hp motor, \$1,500.
VW Beetle motor 1600-cc port heads, needs
overhaul, \$2,500. 1971 VW Cabriolet Super
Beetle w/hitch & extra parts, 13,158 miles on
new motor, \$8,000. 352-595-8013 Young
SPINE GROWTH stimulator worn around
waist 2 hrs/day (not continuous) that
promotes bone growth after surgery, \$1,200.
Used 1 month, still has 10.5 months capacity.
Keeps record of use. 904-707-0983 Hill

CHRISTMAS COLLECTIBLES - ornaments,
Santa figures from around the world, etc.
Miniature schnauzer collectibles - figures,
plates, everything schnauzer related. Porcelain
bird figure collectibles. Sale price individually
for each set. 352-660-2026 Derry
KENWOOD HF transceiver & power supply,
TS-440S PS-50. 904-607-8076 Ferrell

(4) 24" RIM & tire, + 1 extra tire, \$800.
Regular Tunel cover for truck Chevy 1500.
Deep freezer, \$100. 386-627-1351 Eubanks
NEAR PRISTINE cond. Winchester Model
1200 12-gauge pump shotgun. Ribbed barrel,
full chock, beautiful wood stock w/recoil
cushion & wood foregrip. NO scratches/dings,
no corrosion/wear on barrel or bluing. Comes
w/like new foam lined Flambeau hard case
& 25 rds (bandolier) 12-gauge 00 buckshot.
Perfect working order. \$500 firm. 904-333-
8142 Arthur

EGG LAYING chickens: 4 Ameraucana (Easter
Egg/blue & green eggs) hens 2 yo & 2 believe
are Black Jersey Giants hens 1 yo (brown
eggs). Misc equip (nesting bins, feeder
containers, etc.). \$15/chicken or \$80/all six.
Misc. equip depends how many chickens are
purchased. 352-639-0850 Jones

SINGLE PLOT in Riverside Memorial Park,
7242 Normandy Blvd, Jax. Single Premium
Plot, Unit 28, Lot 1, Space B1, \$2,000. 70 Peace

& 35 Morgan silver dollars, VF-XF cond. Varied
dates/mints. \$20 St Gauden gold coins, 1922 &
1924 (1 ea.) no mint, both XF-AU cond. Call for
coin prices. Cash FTF only. No txt. 904-327-
3766 Lutman

BURIAL PLOT, Masonic section, Memory
Gardens, Orange Park, valued \$3,000, sell for
\$2,300 obo. Bob/Lou 386-684-4115 Cox
1985 MONARCH BASS boat, 40 HP, \$1,200.
954-249-1414 Gallo

MEDIA CENTER golden oak finish, "Wood
You" design, 72" h x 75" w x 18.5" d. \$125,
buyer must move. 904-728-8656 Turknnett

16 FIBERGLASS CANOE needs small repair,
no leaks, \$100 firm. 904-540-4399 Pacetti
2008 FORD F-350 Black Lariat Crew Cab
Diesel 4x4 fully loaded, leather seats, new
sunroof, newer tires. Needs driver side exhaust
manifold repaired, \$10,000. Brand new,
black 20-yard dumpster, 20 CY cable pull, tub
style, 20'1 x 45" h x 7.5' w, 3/16 floor plates
w/2x6x3/16 structural tubes on main bottom
rails, 3" structural channels w/18" spacing,
\$7,500. 407-608-8548 Lunsford

TRI-AXLE TRAILER, 6K - axles bumper pull
2 5/16" ball. Front box deck is 16'6"x6'4".
Dovetail 3'x6'4". Adjustable fold-up ramps,
elec brakes, front jack works deck @50%. Tires
up. 1 spare tire, 2 orig. tires. D rings. Running
lights, some work. Registered. \$1,500, no
checks. 386-985-5775 Parente
COLT .22 LR Wyoming Jubilee single action 6
revolver w/display wood box. \$700 obo. 386-
684-6928 Blanton

FREE FERNS, trees & plants. You dig. 904-
264-3788 Barnes

BURIAL PLOT Jacksonville Memory Gardens
(Orange Park), 1 plot in Masonic section,
valued at \$3,500, asking \$3,000 obo. 352-214-
9057 Hayes

STIHL TS 760 concrete saw, older model w/
diamond tip blade. New pull rope, new feet,
tune up a couple years ago. Runs very good.
Serious offers only, \$450 firm. 904-282-8815
Watson

3 POINT HITCH Fertilizer Spreader like new,
used 2x. \$500 firm. Call/txt 352-222-2681
Carroll

JC HIGGINS 12 ga 58320 Bolt action Shotgun.
In Hollister. Please email wlowe59@yahoo.
com. Make offer. 386-385-6095 Lowe

SMALL PONTOON boat, trade for person
protection device. Linear Garage Door Opener
w/remote, \$300. Riding mower Yard Machine
for parts, \$150. 904-616-2944 Phillips

250+ RDS NEW ammo (200-hotshot)
(50-freedom ammo) + addl 'free' 30-misc.
380-ammo. Comes out to less than \$10/
box (\$55/all). Cash only. AR-10 (308) 18"
S/S barrel. Like new, less than 50 rds thru it.
Simmons scope perfectly zeroed to 25 yds.
Incl around 60 rds 308 & rifle case, \$650 firm.
904-600-6048 Vega

2022 ALWELD Pan fishing boat, 18' w/new
Yamaha 70 hp engine & AMW 1660 boat
trailer. Features: hydraulic steering, trolling
motor, fish finder w/camera, live well, rod box,
2 seats w/option to add 3rd, plenty of storage,
more. Garage kept. \$24,100. 904-553-8582
Wolter

FREE CERAMIC moulds, new/used, various
sizes. Georgetown. 813-625-6912 Halin
1930 FORD Model A 2-door sedan, runs/
drives good, new glass & upholstery, 12V
electric turn signals, elec wiper, seat belts, can
send pics. \$20,000. Call between 12:30 pm-10
pm. 904-364-8376 Huggins

DINING TABLE, rectangle, 6 chairs, good
cond, glass top, \$175 neg. You pick up. 2
burial plots, side by side, Riverside Memorial
Park, Jax; value \$5,895 ea, sell \$7,500/both
or \$3,895/ea. Lawn crypt double deck burial
w/vaults, Riverside Memorial Park; value
\$15,995, asking \$12,000. 904-705-7959 Holic
ELECTRIC GENIE lift, 25ft, Genie Lift IWP 25s
arial platform. Overall - good, battery - good,
charger - good; value \$26,000, asking \$3,500.
352-562-8058 Carusone

WOMENS SIZE 3X estate sale brand name
clothing lot. Gently worn and new with tags:
Susan Graver, Quacker Factory and more
brand-name tops, sweaters, cardigans, jackets,
skirts, capri pants and dresses. Bundle Pricing.
By appointment only. 904-631-5103 Sue

2017 JOHN DEERE X350 lawn tractor. Very
good condition. Reliable 18.5 HP Kawasaki
twin-cylinder engine. 42-inch deck. 185
hours. \$2,150. 407-247-6458 Richard

PIGLETS, three 12-week-old males, intact
\$100. Yorkshire mix. Also, about six-month-
old piglets. Prefer text. 352-509-1705 Jewell
2004 HD 1200 Roadster, 6,000 miles. Silver.
All service done at Harley. New tires &
battery. Custom seat. Custom exhaust. Lots of
chrome & extras. Floor dolly & floor jack. SW
Gainesville. \$5,500. 352-318-6215 Tim