



# Kilowatt

The newsletter for members of Clay Electric Cooperative, Inc.

March 2025

The 87th

# Annual Meeting

March 29



## Annual Meeting: Our chance to chat

Your cooperative's Annual Meeting is just around the corner — a chance for our team to speak candidly with you, our members, who are the heart of everything Clay Electric does.

The Annual Meeting, which takes place on Saturday, **March 29** at Keystone Heights Junior/Senior High School, is one of our most significant events of the year. It gives us a chance to connect, reflect on our most recent accomplishments and look ahead to the future.

When you walk through the door with your family, you'll instantly be greeted by Clay Electric's dedicated employees and have the chance to learn about all the co-op's services and programs. It's a great time to ask questions and get answers about the topics that are important to all of us.

The meeting reflects what makes the cooperative unique. It highlights the co-op's commitment to engaging with members and our commitment to improving our local communities, one of the seven cooperative

principles. The voices of our members are essential to the overall success of the cooperative and play into our mission of providing safe, reliable and affordable electricity.

We invite you to join us for a light breakfast and coffee, and after we discuss a bit of business, you'll have a shot at a door prize provided you arrive before the meeting begins. Last year, we gave away about 50 prizes, including outdoor power equipment, gift cards and a big-screen TV.

We're eager to discuss our accomplishments and to share our visions and goals with you, and please, bring your loved ones and join us! Our ears are open, and your participation is key to the co-op's continued success.

Thank you all for being an essential part of the cooperative. I look forward to seeing you at the Annual Meeting. Doors open at 8:30 a.m. and the meeting begins promptly at 9:30 a.m.



Kelley Smith  
Board President

### Kilowatt

Vol. 56, No. 2, March 2025 (USPS 783-900; ISSN 1087-4747) is published by the Member & Public Relations Department of Clay Electric Cooperative, Inc., Highway 100 West, Keystone Heights, Florida, 32656. Subscription \$1 per year to co-op members. Periodicals postage paid at Keystone Heights, Fla. and at additional mailing offices.

Nick Jones, editor

#### Postmaster:

Send address changes to  
Kilowatt  
PO Box 308  
Keystone Heights, FL 32656

On the cover: Photo collage of the 2024 Annual Meeting.

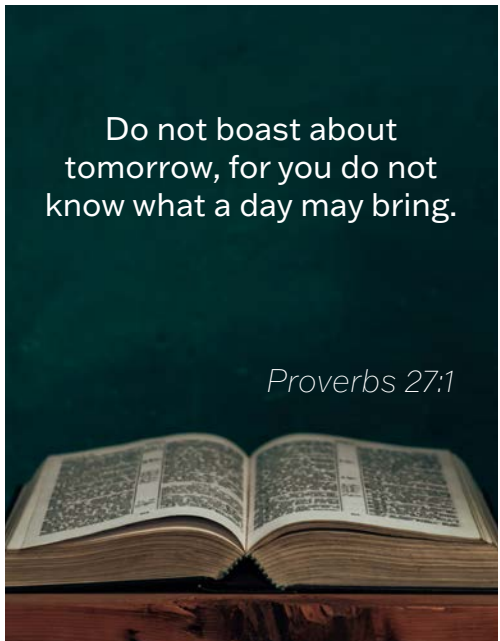
### Check statement for Capital Credits

The co-op's Board of Trustees has declared a \$12 million capital credit refund for members who received service from 1995 through 2023.

Before the Board decides whether a refund can be made, it carefully considers a variety of data and economic conditions. Following this review, trustees decided it was prudent to refund \$12 million. This will be the co-op's 51st consecutive refund of capital credits.

Current co-op members who are entitled to a refund will receive a credit on their March bills. For those entitled to a refund but who no longer receive service from Clay, a check will be mailed.

More details about Capital Credits can be found at [ClayElectric.com](http://ClayElectric.com).



Do not boast about  
tomorrow, for you do not  
know what a day may bring.

*Proverbs 27:1*

## Co-op representatives are focused on keeping power affordable

### Drew Love

*Florida Electric Cooperatives Association*

The Florida Legislative Session has begun, and unlike the narrow majorities in the U.S. House of Representatives and Senate, Florida Republicans have supermajorities in both chambers. Thousands of bills will be filed and considered as the Legislature moves to meet the Constitutional requirement to pass a budget.

During the session, electric cooperatives will lock in on

legislation impacting members. Clay Electric Cooperative is a not-for-profit electric utility vulnerable to government mandates and excessive regulatory burdens, which could result in increased rates or directly affect the safety and reliability of Clay's infrastructure. The focus during the session will be legislation impacting the electric cooperatives' ability to build generating resources to meet member needs, changing requirements for relocating infrastructure due to road projects and protecting utility workers.

Florida families and businesses expect reliable power provided at an affordable price. Florida's electric grid maintains a solid reliability rating of 99.9 percent, and Clay is doing its part to help maintain that rating.

As legislation moves through the process this year, we will support initiatives allowing for the continued promotion of our mission to provide safe, reliable, and affordable electricity for all while opposing proposals limiting our shared goals.



**Kat Cammack (R)**  
US House District 3  
Alachua, Baker,  
Bradford, Columbia,  
Gilchrist, Levy, Marion,  
Suwannee, Union

5550 NW 111th Boulevard Suite A  
Gainesville, FL 32653  
Phone: (352) 505-0838  
2630 SE 3rd Street  
Ocala, FL 34471  
Phone: (New office, not yet available)  
cammack.house.gov



**Aaron Bean (R)**  
US House District 4  
Clay County

4465-6 US Highway 17  
Fleming Island, FL 32003  
Phone: (904) 830-3933  
bean.house.gov



**Chuck Brannan (R)**  
House District 10  
Alachua, Baker,  
Bradford, Columbia &  
Union counties

Baker County Courthouse, Suite 117  
339 East Macclenny Avenue  
Macclenny, FL 32063-2231  
(904) 259-0995  
1262 SE Baya Drive  
Lake City, FL 32025  
(386) 758-0405



**Sam Garrison (R)**  
House District 11  
Clay County

1835 East West Parkway, Suite 18  
Fleming Island, FL 32003-5311  
(904) 278-2062



**Sam Greco (R)**  
House District 19  
Flagler County

4877 Palm Coast Parkway Northwest,  
Suite 1  
Palm Coast, FL 32137-3677  
(386) 446-7644



**Judson Sapp (R)**  
House District 20  
Clay & Marion  
counties

620 South State Road 19, Suite 4  
Palatka, FL 32177-3945  
(386) 249-7060  
115 Southeast 25th Avenue  
Ocala, FL 34471-9179  
(352) 496-3430



**Yvonne Hayes Hinson (D)**  
House District 21  
Alachua & Marion  
counties

2815 Northwest 13th Street Suite 202  
Gainesville, FL 32609-2865  
(352) 264-4001



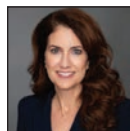
**Chad Johnson (R)**  
House District 22  
Alachua, Gilchrist &  
Levy counties

105 Southwest 140th Court, Suite 1  
Newberry, FL 32669-3391  
(352) 496-3700



**Richard Gentry (R)**  
House District 27  
Lake, Marion &  
Volusia counties

275 South Charles Richard Beall  
Boulevard, Unit 108  
DeBary, FL 32713-3719  
(386) 251-1100



**Jennifer Bradley (R)**  
Senate District 6  
Alachua, Baker, Brad-  
ford, Clay, Columbia,  
Gilchrist, Union

1845 East West Parkway, Unit 5  
Fleming Island, FL 32003  
(904) 278-2085



**Tom Leek (R)**  
Senate District 7  
Flagler, Putnam &  
Volusia counties

4475 US 1 South, Suite 404  
St. Augustine, FL 32086  
(386) 446-7610



**Stan McClain (R)**  
Senate District 9  
Alachua, Levy &  
Marion counties

315 SE 25th Avenue  
Ocala, FL 34471  
(352) 732-1249



**Keith Truenow (R)**  
Senate District 13  
Lake County

1951 Woodlea Road  
Tavares, FL 32778  
(352) 750-3133

*The legislators listed serve constituents who reside within Clay Electric's service area. Only counties served by the co-op are listed. Note: US House District 6, which covers Flagler, Lake and Volusia counties, was vacant as of publication and omitted.*

# The Way: Giving back, with some help from Clay Electric



Member Relations Representative Steve Hollingsworth presents a \$20,000 grant check to The Way Free Medical Clinic.



Energy Efficiency Analyst Tim Stanley performs a free energy survey and speaks with clinic Executive Director Andrea Crowder.

Operation Round Up, to which more than 80 percent of Clay Electric members contribute monthly, is focused on giving back to organizations in the local community that are also focused on doing the same.

Those nonprofits include The Way Free Medical Clinic in Orange Park, which is run by volunteers including physicians and nurses. The Way, a co-op member that Clay Electric is proud to serve, gives thousands of medical treatments each year to uninsured, low-income residents of Clay County.

Basic primary care, prenatal care and other diagnostic procedures are completely free for those who qualify. The clinic runs entirely on donated funds, and in addition to medical care, it also provides dental care at its Clay County location. The organization serves approximately 50,000 uninsured residents living at 300 percent of the Federal Poverty Guideline or less.

Recently, the Clay Electric Foundation granted \$20,000 in Operation Round Up funds to the clinic, and on top of that, a third

party partially donated a solar power system to the nonprofit to help keep its operating costs low.

“Clay Electric Energy Services got involved and helped with the interconnection agreement, made sure everything passed inspection and ensured things were installed properly, and we’re back out here again to do a follow-up and answer any questions the member might have about the system,” said Clay Electric Energy Efficiency Analyst Tim Stanley.

Stanley and Orange Park District Member Relations Representative Steve Hollingsworth both gave the unit a once-over and provided Andrea Crowder, the organization’s executive director, with some useful advice to ensure the system is operating at its peak. She also got some tips about how to ensure it runs most efficiently to make sure the clinic’s energy bill stays reasonable.

“The solar panels were something that Don Fann, the development director, wanted to have for us at this new location to try and lower the bills,” Crowder said. “With this partnership (with the solar company),

we’re able to at least lower the cost of our energy bill on a monthly basis and try to put the funds that we need toward the care of our patients.”

The Way began its Expanding Capacity Care initiative a few years ago with the goal of increasing access to healthcare and increasing the number of new patients served. That started in part with the establishment of its new facility on College Drive, which just opened last year, as well as raising the income limit for patients from 200 percent to 300 percent of the Federal Poverty Guideline.

The grant from Clay Electric directly helps support the clinic’s expansion of free medical and dental services, providing them with critical patient care supplies.

“Thank you (Clay Electric) for always listening to us, knowing that we’re here for the community,” Crowder said. “We’re here to help our residents, keep them healthy, and we just hope that the partnership we have will continue in the future.”

You can learn more about The Way Free Medical Clinic by going to [TheWayClinic.org](http://TheWayClinic.org).

The Clay Electric Foundation Board of Directors approved

## \$133,700 IN GRANTS

during its January and February meetings.

### Fire Rescue Support (Marion County) \$5,000

An organization dedicated to supporting fire rescue personnel. Funds will be used to provide the services of a chaplain.

### Project Hope of Marion County (Marion County) \$10,000

Provides solutions for homelessness among women and their dependent children. Funds will help offset the costs associated with resident housing.

### Food4Kids (Alachua County) \$10,000

A volunteer organization in Gainesville that provides food in backpacks to 190 children during the school year. Funds will be applied to the purchase of food and backpacks.

### Putnam County Fair Authority (Putnam County) \$5,000

Oversees the day-to-day operation and maintenance of the fairgrounds and facilities. Funds will be applied to the purchase of new scales for the Youth Livestock Program.

### Pop Smoke K9 for Veterans (Volusia County) \$1,500

Seeks to provide training, support and certification to military veterans in need of a certified K9 to reclaim their independence. Funds will help to establish a training facility.

### The Pearl Project (Marion County) \$2,500

Offers hope and practical help to foster and adoptive families. Funds will support the HOPE Family Camp program.

### Melrose Library Association (Putnam County) \$4,500

Seeks to enhance the quality of life of Melrose residents by increasing the use of the library by current patrons, attracting new patrons and obtaining additional resources for the library. Funds will provide books and weekend meals to elementary school students.

### Bethlehem Methodist Episcopal Cemetery Restoration Organization (Alachua County) \$1,000

Preserves and protects the historical African American cemetery in Archer. Funding will pay for the removal of dead trees from the cemetery.

www.ClayElectric.com

### Salvation Army of Clay County - Camp Keystone (Clay County) \$10,000

Provides emergency assistance in times of crisis. Grant funds will help to send 40 children to summer camp.

### Vineyard Transitional Center (Clay County) \$10,000

Supports homeless individuals with meals, temporary housing and essentials. Funds help build a temporary housing facility for men reentering the community after incarceration.

### Rodeheaver Boys Ranch (Putnam County) \$20,000

A 790-acre sanctuary for boys who need a home, a family and roots for a brighter future. Funds will be applied to the replacement of the playground at the ranch.

### US Veterans Post 104 Corporation (Putnam County) \$10,000

Supports American military veterans and their families, as well as local military charities. Funding will be applied to the replacement of the building's roof.

### Lake Weir Hurricane Kickoff Club (Marion County) \$1,000

The fundraising organization for Lake Weir High School's athletic program. Funds will provide free meals for student-athletes.

### United Charitable (Clay County) \$1,000

Offers ways for people to give to charities. Funding supports an initiative to equip young adults with skills and knowledge to become leaders in their communities.

### Mossman Home Preservation Foundation (Putnam, Alachua counties) \$1,000

Dedicated to preserving and revitalizing the historic Mossman Home and Mossman Hall as a cultural hub in Melrose. Funds support an initiative to cultivate produce for distribution to community members.

### The Nehemiah Project (Putnam County) \$5,000

Promotes the recovery of those faced with mental health and substance use challenges. Funds will be applied to the program's educational and programming costs.

### Baby Brain Builders (Putnam County) \$6,000

Attempts to give every child in Putnam County the opportunity to reach his/her full brain development by increasing brain function

through language acquisition. Funds will provide materials for the program to day care centers in the county.

### Pace Center for Girls (Clay County) \$7,000

Provides girl-centered, strength-based and trauma-informed services to girls and young women. Funding will support a butterfly and learning garden as part of a STEM initiative.

### Seeds of Love (Clay County) \$10,000

Meets the needs of low income and homeless families in Clay County. Funds will support the ministry's Back to School Bash event.

### Gateway Art Gallery/Art League of North Florida (Columbia County) \$8,200

Offers several community art programs, such as the Girls' Summit for at-risk preteen and teenage girls. Funds will support youth programs.



The Hawthorne Area Resource Center previously received \$10,000 in grant funds.



Knights of Columbus was previously awarded a \$10,000 grant.



The ACORN Dental Clinic in Gainesville previously received a \$20,000 grant check.

# Meet Clay Electric's 2025 Youth Tour representatives

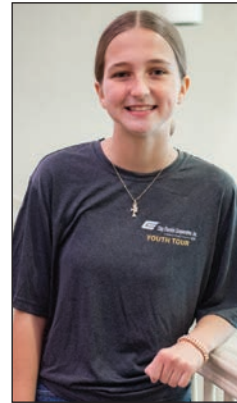
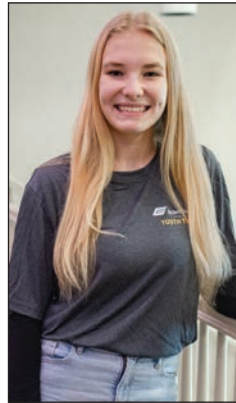
Each year, we're proud to give four bright scholars an all-expense paid trip to Washington, D.C. during the nation's Youth Week, and recently, we selected those four students after a visit to Tallahassee where a group of over 100 high school juniors competed to earn a spot.

Those high schoolers all represent electric cooperatives around the state, including Clay Electric. During their trip to the capital, they were all given a written quiz and they each gave a speech scored by a panel of nonpartisan judges.

Clay Electric's four winners (pictured top right, respectively) include: **Audrey Ellenburg** (Newberry High School), **Lilla Chapman** (Columbia High School), **Mary Fishley** (QI Roberts Junior/Senior High School) and **Lilian Alcibar** (Crescent City Junior/Senior High School). Two alternates (not pictured) were also identified: **Lucius Manley** (Oakleaf High School) and **Isa Vora** (Buchholz High School).

While in Tallahassee, students tour the Florida Capitol, have a chance to speak candidly with representatives, visit other local landmarks — and chaperones take them bowling one night, too.

Our four selected students will travel along with 28 others from Florida, each representing electric cooperatives, to Washington this summer for a weeklong tour joining more than 1,800 students across the nation. They'll visit some of America's most popular and historic places including the Arlington National Cemetery, Lincoln Memorial and Smithsonian Institution.



Over 100 high school juniors visit Tallahassee for a chance at the trip to Washington.



Students have the opportunity for Q&A sessions with Florida representatives.



The students also get a chance for a bit of fun during a night of bowling.



Participants get to visit the Florida Capitol, other landmarks and museums.

## Storm evacuation help for those with special needs

It's vital for members to have a plan in case of an emergency. If you or someone you know has special needs and requires assistance in case of evacuation, your local government can help. Contact your county emergency management office to learn about shelters in your area.

For members with special needs, visit [floridadisaster.org/shelters](http://floridadisaster.org/shelters) or call 1-800-342-3557 to register with your county emergency operations center.

## Chocolate Chess Pie

### Ingredients

- 9-inch regular pie shell (not deep dish)
- 1 ½ cups granulated sugar
- 3 tablespoons cocoa powder
- ¼ cup butter, slightly melted
- 2 eggs, slightly beaten
- 1/8 teaspoon salt
- 1 can evaporated milk (5.33 oz)
- 1 teaspoon vanilla

### Directions

1. Prepare pie shell. Poke holes with fork in bottom and sides of shell, then bake for approximately 10 minutes until pie shell is light brown; let it cool before adding filling. (Pie weights will help keep the crust from rising.)
2. Mix sugar, cocoa powder and butter; stir well.
3. Add eggs and beat with electric mixer for 2 minutes; then add salt, evaporated milk and vanilla, mix well.
4. Pour filling into pie shell and bake at 350 degrees for 45-60 minutes. The pie is done when a toothpick is placed in the center and comes out clean.

# Notice of Annual Meeting

Notice is hereby given that the gathering portion of Annual Meeting of Clay Electric Cooperative, Inc. members will be held at the Keystone Heights Junior/Senior High School cafeteria, Keystone Heights, Clay County, Florida 32656 at 9:30 a.m., Saturday, March 29, 2025.

This gathering will feature snacks and beverages for those attending. Each adult attending will receive ONE welcome bag and ONE door prize ticket.

The bill credit prizes will NOT be part of the gathering. The winners of those prizes will be announced during the Annual Meeting video report by March 21. The video report will be available on Clay Electric's website and social media.

From January 27 - March 11, eligible Members of the cooperative are asked to take action upon the following matters.

(a) The election of a trustee from District No. 1, a trustee from District No. 8, a trustee from District No. 9, via online voting or absentee ballot only, to serve three-year terms. You are hereby notified that at the meetings of districts No. 1, No. 8 and No. 9, the following were nominated for membership on the Board of Trustees.

District No. 1

Nominee: Cindy Loose

District No. 8

Nominee: Terri Kane

District No. 9

Nominee: Karen Hastings

Prior to January 27, the Secretary placed in nomination the above-named official candidates from each district.

Clay Electric members who vote online or by absentee ballot will elect one trustee for each of the districts. The bylaws provide that the two nominees of each district receiving the highest vote shall be the official nominees in the district and shall be listed in the order of preference indicated by the respective vote.

(b) To vote on two proposed amendments to Clay Electric Cooperative, Inc. bylaws.

(1) Article III: Meeting of Members, Section 3: Notice of Members' Meetings — The proposed change will have the following substantive changes: Increase the maximum number of days for official notice from 45 to 90 days.

(2) Article IV: Trustees, Section 3: Qualifications — The proposed change will have the following substantive changes: Trustees will be disqualified if they have been convicted of or pled guilty to a felony or if they have been convicted of a first-degree misdemeanor five years before or while an active trustee.

CLAY ELECTRIC COOPERATIVE, INC.

By: Kelley Smith, President

Attest: Jo Ann Smith, Secretary

## The Trading Post

Submit your Trading Post ad by sending it to Clay Electric, PO Box 308, Keystone Heights, FL 32656. For more Trading Post ads or to submit your ad online, visit ClayElectric.com.

**PRESSURE WASHER**, \$150. Shop cart, \$80. Air compressor, \$150. White pickup cap, 7'8" x 6'3", \$125. Spray gun unplugged, \$45. Small electric chipper, \$80. Polishing motor 2 wheels, \$90. 2.5 ton AC, \$1,000. 386-559-7408 Gibbs

**PLANTS** in 5-gal. pots. Queens Tears or Fingernail plants, \$5 ea. Loquats or Cranberry Hibiscus, \$10 ea. Table saw \$10, needs new bearing. Pls txt 386-301-0819 Naizby

**WEIDER 148** weight bench, used but looks new, incl manual, 23 weights (various). \$150 cash. Doc 904-509-7599 Gillespie

**BURIAL PLOT:** Jacksonville Memory Gardens, Orange Park, 1 plot in Masonic section, valued at \$3,500, asking \$2,200 obo. 352-214-9057 Hayes

**VINTAGE TYPEWRITERS:** Royal Quiet De Luxe portable typewriter w/case, Serial #A-1473034. 1 owner, vg cond., works correctly except 1 stop tab, \$100. Smith Corona Super 12 typewriter w/case purchased 1974, Serial # 305388, manual, good cond., works, needs new tape ribbon, \$30. Electric Smith Corona 2200 typewriter, vg cond, works, incl manual, 4 black & 1 red ribbon cartridge, Ko-Rec-Type film, 3 changeable types & dust cover. 1979, Serial #187390, \$60. 2 white ceramic bathroom sinks 20"W, 16.5" front-back on sides & 16.75" center front to back. Wall mounted w/options to add pedestal/legs, \$40/2. Weight Bench - IMPEX Competitor Bench CB-204 + weight plates: 2-#25, 2-#15, 2-#10, 2 Spring Clips & 1 Weight Bar. New cond., \$65. All pics at online Trading Post. 352-207-5060 Mendheim

**S&W 357** Model 686, 2.5", stainless steel, pachmayr & orig. rose wood grips, ammo (~500 rds), orig. box & manual, \$800. 352-770-2982 McDougal

**(4) HIGH LIFT FARM** jacks, #6000 capacity. Lifting arm ratchets up from 4" to 52" above base; 30" handle makes lift easy. Bought for \$75/ea., used 2x, now selling \$40/ea. or \$150/all 4. Cash only. 904-264-7801 Beery

**ANDERSON 5TH WHEEL** hitch, tows up to 24,000 lbs, GTWR & 4,500 lbs tongue wt. \$500. 575-545-2408 Ram

**4 BURIAL PLOTS** in Orange Park, Magnolia Cemetery on Kingsley Ave. All in Block #1 & lots #37, 38, 39 + 40. Currently valued @ \$2,800 ea., asking \$2,500 ea. or \$10,000/all 4 plots. Lv msg 904-662-1702 Snow

**8 BURIAL PLOTS**, Russell Haven of Rest, Green Cove Springs. Adjacent lots (2 rows of 4) in orig. center section. \$2,800/pair, will discount multiple pairs. Txt/call 904-600-2540 Clyma

**CIVIL WAR BOOKS:** Natl Historic Society-The Image of War: 1861-1865. 6-vol set. 2,700+ pgs. Dust covers in good shape, books exc. shape, \$85. The Civil War-The Definitive Reference. 800 pgs. Dust cover in good shape, book exc. shape, \$20. A few other books \$3-\$10 ea. 407-247-6458 Schneider

**2019 TOYOTA C-HR** 2.0 liter engine 4 cyl. Exc. cond. Garage-kept. Medium tri coat blue metallic paint. 4 door, 4 custom mags added, lane departure alert w/steering assist, pre-collision system w/pedestrian detection, backup camera, full speed range dynamic radar cruise control. \$19,500 obo. 386-882-5202 Anderson

