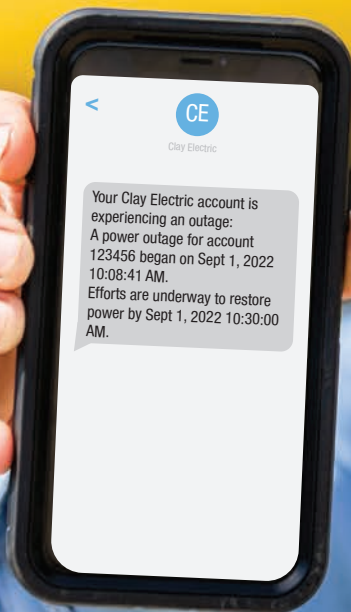


Kilowatt

The newsletter for members of Clay Electric Cooperative, Inc.

September 2022

Outage Alerts Now Available



Co-ops experiencing never-before-seen increases in power expenses

We are continuously examining ways to operate more efficiently, while still providing the level of friendly, reliable service you expect and deserve.

Unfortunately, despite our best efforts, we have to raise rates from time to time. These decisions are not easy. As a co-op, we will always be transparent with you about rate increases.

Due to the natural gas industry being in a state of crisis, the costs all electric co-ops and power suppliers have to pay for generation have grown exponentially. When the year started, natural gas was \$2/MMBtu and has since increased more than 350 percent. Future increases of about 15 percent are forecast as natural gas remains over \$9/MMBtu. These increases have put our energy costs \$65 million over budget. The most recent increase was \$19.8 million.

Clay Electric has never seen increases in power costs of this magnitude. As a result, to recover some of the fuel expenses, there is a Power Cost Adjustment increase on your bill for September. The adjustment is an additional \$5 per 1,000 kWh consumed. Another increase is possible in October, and it could be higher than September's rate hike. The projection is natural gas prices will remain high the rest of this year and into 2023, which would continue to result in higher electricity costs. About 70 percent of the fuel used to generate power in Florida is natural gas, and it's a sizable part of the generation mix for the co-op's wholesale power provider, Seminole Electric.

The rate increases you see on your bill merely cover our costs to purchase the fuel used to generate power. Our staff and the Board do not take these increases lightly, and continue to look for ways to lessen the impact on our members. As soon as natural gas prices go down, we will lower our rates. Remember, we are a not-for-profit electric co-op and you receive power at cost.

We are constantly working for you; members make co-ops special

Fall is a busy season, and October is a particularly eventful month with school,

community and sports events in full swing. It's also when all cooperatives celebrate National Co-op Month.

When I say we celebrate Co-op Month, it really means we are celebrating you! After all, our co-op wouldn't exist without you, our members.

Our core business purpose is to serve as your electricity provider, but our larger mission is to help make our corner of the world a better place. "Concern for Community" is one of seven guiding principles that all co-ops share.

Similar to how our wires run through our territory, our concern for community flows through all of our decisions — because being a co-op means being a responsible partner and good neighbor.

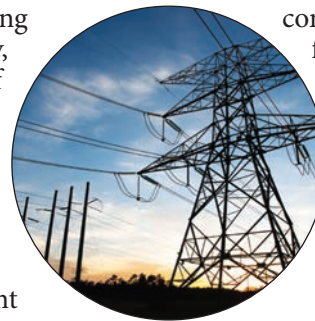
We work to help our communities thrive through initiatives led by our employees and Board that's composed of neighbors who live right here. Because we're local, we understand our area's unique needs and strive to help meet them.

We're proud to support local students through our Youth Tour and scholarship programs. With your help, we are also able to offer Operation Round Up to assist our community's most vulnerable.

The word "cooperative" is close to "cooperation," meaning people working together toward a common goal — mutually benefiting one another and the larger community. That's the essence of the cooperative spirit. Our employees and member-elected Board are invested in where we live and serve.

Above all, as a co-op, we put members' priorities first. As your trusted energy partner, we know saving energy and money is important to you. That's why we have numerous programs in place to help you, including free energy surveys and rebates when you invest in energy-efficient items.

We want to empower you to manage energy use. If you have not already, please take a moment and download our app, MyClayElectric. Through the app, you can conveniently monitor and manage energy use. And we're here to help, too. Contact us if you have questions.



Ricky Davis
General Manager

Kilowatt

Vol. 53, No. 5, September 2022 (USPS 783-900; ISSN 1087-4747) is published by the Member & Public Relations Department of Clay Electric Cooperative, Inc., Highway 100 West, Keystone Heights, Florida, 32656. Subscription \$1 per year to co-op members. Periodicals postage paid at Keystone Heights, Fla. and at additional mailing offices.

Justin Caudell, editor
jcaudell@ClayElectric.com

Postmaster:
Send address changes to
Kilowatt
PO Box 308
Keystone Heights, FL 32656

Members now have access to outage alerts

If the power goes out, members can now be notified and get restoration estimates in the palm of their hand.

The alerts, which can be sent as a text message to cell phones or email, will provide real-time information personalized for the member's home or business in the outage. Enrolled members will receive alerts automatically when the co-op's Control Center detects a power outage at their location. They do not need to contact the co-op to report an outage.

There are three possible notifications members will receive in an outage: when the outage is detected; when it's restored; and if there's an update. The outage notifications will contain an estimated time for restoration.

There are times when the power may go out for a few seconds, or blink, due to factors such as tree branches hitting a line. These momentary outages will not trigger an outage notification to be sent.

"We know how frustrating it is when the power goes out, but this new tool gives you peace of mind in knowing we are addressing the problem," said Chief Public Relations Officer Derick Thomas. "Your co-op is committed to safely delivering reliable power, and when it goes out due to a storm or another unfortunate circumstance, our crews will work as quickly and safely as possible to



Crews work as quickly and safely as possible to restore service after an outage.

restore service."

Members enrolled in MyClayElectric are automatically in the outage alert system and will receive emails or text messages when the power is out at their home or business. To opt out of alerts, or to change how they are received, members can visit the settings within the MyClayElectric app. On MyClayElectric.com, click "Notifications" in the menu and then select "Manage."

Members not currently enrolled in MyClayElectric are encouraged to do

so. In addition to being able to sign up for outage and account notifications, MyClayElectric offers many benefits. As soon as you log in, you'll be able to view your billing history and make a payment with just a couple of clicks, or setup AutoPay. You will also have access to detailed, easy-to-read information about your electric use, which will help you make informed decisions and save money.

To register for MyClayElectric, get the app or visit MyClayElectric.com.

Frequently Asked Questions about the outage alert system

Can more than one person receive outage alerts?

Yes. Members can allow another person access to their MyClayElectric account with their own login credentials and sign up for notifications.

It's easy to set up and lets the added person view if the account is in a known outage, sign up for notifications and more. As the primary user, the member will still have control of their account and can delete secondary users at any time.

To add a secondary user, members must login to their account at MyClayElectric.com, click "My Profile" from the menu bar and select "My Information." Then, click "Manage My Registered Accounts." At the bottom of the page, select "Add Users" and follow the instructions.

The person being added will receive an email to set a

password before receiving MyClayElectric access.

How do I opt out of alerts?

To opt out of receiving alerts, or to change how they are received, members can visit the settings within the MyClayElectric app. On MyClayElectric.com, select "Notifications" in the menu and then select "Manage."

What triggers an outage communication?

Outage communications will only be generated when an outage is created in the system. There are times when the power may go out for a few seconds, or blink, due to factors like tree branches hitting a line.

These momentary outages will not trigger an outage notification to be sent.

The Clay Electric Foundation Board of Directors approved

\$168,200 IN GRANTS

during its Aug. and Sept. meetings.

The Island Theater (Clay County)

\$5,700

The Island Theater in Fleming Island seeks to engage the community through a rigorous theater education program. Grant funds will be used to purchase a portable lighting and audio system to bring programs to various locations.

Goodwill Industries of North Florida (Putnam County)

\$15,000

Goodwill Industries of North Florida is a local, not-for-profit organization that removes barriers to employment through training, education and career opportunities for the communities it serves. Funding from the grant will help the Take Stock in Children program provide college scholarships.

God's Kitchen, Inc. (Putnam County)

\$5,000

God's Kitchen is a volunteer organization in Palatka that provides and delivers one hot meal per day to adults who are permanently or temporarily homebound due to a mental or physical disability. Grant funding will be used for food distribution and supplies for the soup kitchen.

Catholic Charities Bureau (Clay County)

\$7,500

Catholic Charities Bureau provides emergency financial and food assistance, immigration legal services, refugee resettlement and caring for persons with intellectual and developmental differences. Funding from the grant will support the food pantry at St. Luke's Catholic Church in Middleburg.

Project Hope of Marion County (Marion County)

\$5,000

Project Hope of Marion County, based in Ocala, provides solutions for homelessness among women and their dependent children. Grant funds will provide furnishings and appliances for some of the housing units.

Fellowship Baptist Food Pantry (Union County)

\$10,000

Fellowship Baptist Church of Raiford offers a food pantry for those in need in surrounding counties. Grant funds will be applied to the cost of additional cooling units and shelves.

K9s for Warriors (All counties)

\$1,000

K9s for Warriors is dedicated to providing service canines to veterans suffering from trauma as a result of military service post-9/11. Grant funds will support costs in pairing a trained service dog with a deserving warrior.

Pay It Forward Outreach Corp (Marion County)

\$15,000

Pay It Forward Outreach Corp is a charitable Christian donation program assisting families facing hardships by providing furniture, housewares, clothing and other essentials. Grant funds will be used to support the Mending Hearts program.

Putnam County Bread of Life (Putnam County)

\$10,000

The Bread of Life of Palatka is a nonprofit organization that works to address hunger and food insecurity in Putnam County, and currently serves meals to more than 80 people each day. Grant funds will be used to purchase food.

Foundation for Rural Education Excellence (Putnam, Alachua, Union counties)

\$15,000

Foundation for Rural Education Excellence enhances academic success and career opportunities for rural students in northeast Florida. Funds from the grant will support local school district employees seeking to complete academic degrees and become teachers.

Alachua County Youth Fair & Livestock Show Association (Alachua County)

\$15,000

The Alachua County Youth Fair & Livestock Show Association is a volunteer group that conducts and operates public fairs and expositions pertaining to agricultural matters and more particularly to the exhibitions of livestock, poultry, crafts, youth projects and farm products. Grant funding will purchase a new certifiable weigh scale for livestock.

Florahome-Grandin Volunteer Fire Dept. (Putnam County)

\$14,000

The Florahome-Grandin Volunteer Fire Dept. is a volunteer organization that strives to provide excellent, innovative and professional fire protection, life safety and public education to meet the needs of its diverse community. Funding from the grant will purchase new bay doors for the fire station.

Waste Not Want Not (All counties)

\$15,000

Waste Not Want Not is a volunteer-based group whose mission is to prevent the discarding of food and other items that can be used to fight hunger and poverty. The group does this by rescuing food daily from numerous sources for distribution to local charitable organizations, and through other cost-effective initiatives. Grant funds will be used to support the food rescue and distribution program.

West Putnam Volunteer Fire Department (Putnam County)

\$15,000

The West Putnam Volunteer Fire Department responds to emergency calls in a 62-square mile area of West Putnam County and gives mutual aid to neighboring counties. Funds from the grant will assist with replacing the station's roof.

Challenge Enterprises of North Florida, Inc. (Clay County)

\$15,000

Challenge Enterprises in Green Cove Springs promotes the power of people and possibilities for individuals living with disabilities. Grant funds will help with renovations, equipment purchases, technology tools and improved Wi-Fi services in the new Club Challenge.

Community Foundation for Ocala/Marion County (Marion County)

\$5,000

The Community Foundation of Ocala/Marion County strives to connect charitable interest of the donor to build a strong community by serving as a conduit among donors, charitable organizations and community leaders. Grant funds will support the Youth Philanthropy in Action program.

Notice of bylaw change

Per Article XX of the Clay Electric Foundation, notice is hereby given that during the Aug. 25 meeting, the Clay Electric Board of Trustees amended the Clay Electric Foundation bylaws. Amendment XXV, Amount of Expenditures, is being amended to read: Not more than twenty thousand (\$20,000) dollars, annually to any group, organization, charity or like organization. This change will take effect at the November Clay Electric Foundation Board Meeting.

Hurricane Irma's wrath left few unscathed

The warnings were stark, and direct: Prepare now.

"Hurricane Irma is a major and life-threatening storm," Gov. Rick Scott said on Sept. 4, 2017, as the Category 5 storm had its sights on Florida and he declared a State of Emergency for every county in the state. "In Florida, we always prepare for the worst and hope for the best, and while the exact path of Irma is not absolutely known at this time, we cannot afford to not be prepared."

A Clay Electric Facebook post at the time cautioned that some members could be without power for a week.

The worst-case scenario did happen. Hurricane Irma became the largest storm ever to make landfall in Florida, covering the whole state. The storm struck North Florida on Sunday, Sept. 10 and was out of the area less than 24 hours later, but left an unprecedented amount of damage to Clay Electric's service area and distribution system.

All told, 92 percent of the co-op's territory (162,000 members) didn't have power at the height of the storm. When restoration began, more than 1,000 line and vegetation management personnel from cooperatives and contractors in 11 states were on the ground to assist Clay Electric.

By the numbers, the crews would end



up replacing more than 400 power poles and 369 transformers while rebuilding the co-op's distribution system. Nearly a million dollars was spent on materials, and the co-op received more than 105,000 calls about outages and damage between Sept. 10 and 17.

Flooding was a major challenge as Hurricane Irma's slow crawl across the area resulted in torrential rain. Thirteen

substations were without service during the storm, and a few were under water. Personnel had to wade in deep water in several locations.

"It was all hands on deck," said co-op Division Manager for Transmission and Distribution Construction Mark Townsend. "It was a big challenge and a massive undertaking to get enough crews to restore power."

At district offices and Clay Electric Headquarters, employees were also working around the clock. Hosting outside crews and making sure everyone was adequately supplied was a carefully orchestrated process. Visiting crews needed to be checked in, have their trucks fueled and receive supplies and food. Each district served up to 1,000 meals per day, distributed thousands of bottles of water and coordinated hundreds of pounds of laundry.

After restoration and cleanup during the week after Irma, many members expressed their thanks through handwritten notes and emails, photos and posts on Facebook, and offers of food and treats for the crews.

Irma ended up being one of six major hurricanes (Category 3 or higher) during an active 2017 hurricane season. The storm followed a 2016 season that saw two storms impact Clay Electric, Hermine and Matthew.

When disaster struck South Florida, co-op took action

Thirty years later, the destruction still haunts Floridians.

On Aug. 24, 1992, Category 5 Hurricane Andrew's assault on South Florida began and broke a 42-year streak of Florida dodging a tropical storm's direct hit.

The aftermath was 65 people dead, 63,000 homes destroyed, 175,000 homeless, and in the immediate days following, a million people without power.

"It looked like someone had dropped a bomb on that place," Clay Electric employee Gary Screen said at the time. "As far as the eye can see, it's total destruction. Nothing was spared."

Gary was one of eight co-op employees who left North Florida on Aug. 27, 1992, to help Florida Power and Light restore service to its customers. Several other employees were called to duty by the National Guard, and even more lent a hand by collecting donations for storm victims. Clay Electric also worked with the American Red Cross to help find homes

and shelters in North Florida for evacuees.

Before Hurricanes Katrina, Irma or the countless other destructive storms of this century, Andrew was at the time the nation's worst in damages.

In 1992, the National Hurricane Center couldn't measure how strong the winds were when Andrew hit. At the center's headquarters in Coral Gables, a rooftop anemometer on the eight-story building measured a gust of 168 mph before it was ripped off the roof by the wind. It is now estimated the storm had peak winds of 175 mph or higher and spawned several tornadoes. Andrew drove South Florida to reform all of its building codes.

Joining Gary in the co-op's storm response in August 1992 were Gary Brewer, Arnold Coulliette, Eric Crawford, Frank Goolsby, Mark Mosley, Bruce Sapp and Mark Townsend. Eric and Mark are still at the co-op.

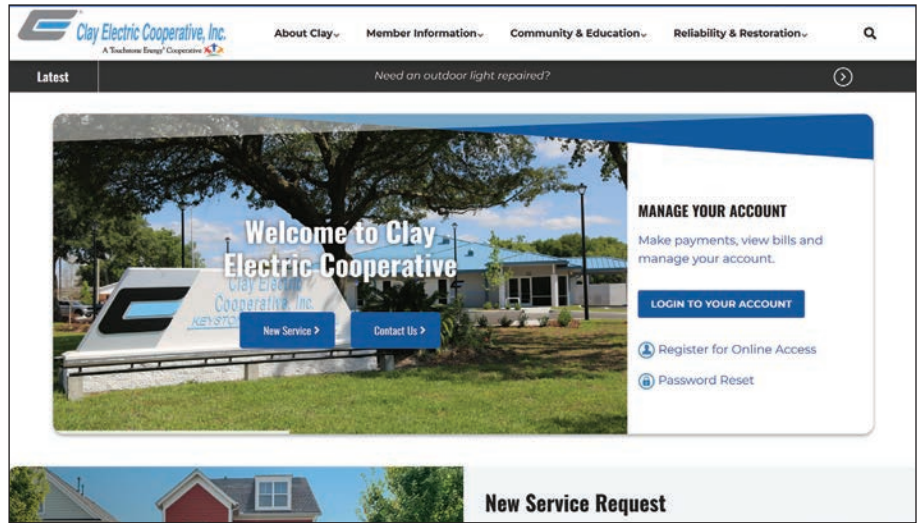
Co-op revamps website to be more user-friendly

ClayElectric.com has undergone a makeover and features a fresh, modern design.

The new website streamlines navigation and offers an enhanced user experience. New residents and businesses can request service in one click on the home page, and visitors can easily find information with the site's fly-out menu bar.

With the rise in consumer interest in solar, a new page on the website explains RGS/solar systems and the steps it takes to sign up for solar. Members who currently have a system can learn more about billing, generation and consumption.

ClayElectric.com also features the popular Trading Post, which has a new look and allows members to post an ad online again.



Forecast team changes hurricane outlook, but it's still bad

Entering the peak period for storms, a respected team of meteorologists at Colorado State University has reduced their hurricane forecast slightly, but continue to call for an above-average Atlantic season.

The forecast now predicts 18 named storms in 2022 (one fewer than the original outlook), including the five named storms that have already formed this season (Alex, Bonnie, Colin, Danielle and Earl). Of those, the team expects eight (one fewer than the original outlook) to become hurricanes and four to reach major hurricane strength (Category 3 or higher) with sustained winds of 111 miles per hour or greater.

The team cites the likely persistence of La Niña as a primary factor for the continued anticipation of an active season. Sea surface temperatures averaged across the tropical Atlantic and Caribbean are slightly warmer than normal. A warmer than normal tropical Atlantic provides more fuel for developing storms. However, sea surface temperatures are only slightly above normal, so the forecast team considers this a mostly neutral factor for the remainder of the season.

The storm forecast also includes the probability of major hurricanes making landfall the remainder of the season:

- 68 percent for the entire U.S. coastline (full-season average for the last century is 52 percent);
- 43 percent for the U.S. East Coast, including the Florida peninsula, (full-season average for the last century is 31 percent);
- 43 percent for the Gulf Coast from the Florida panhandle westward to Brownsville (full-season average for the last century is 30 percent);
- 57 percent for the Caribbean (full-season average for the last century is 42 percent).

Members are reminded to take the proper precautions and to remember that it takes only one landfall event nearby to



make this an active season. Four storms are forecast to reach major hurricane status this year. Hurricane Matthew was the most powerful storm of the 2016 season. More than 73,000 Clay Electric members were without power in the wake of the storm.

make this an active season.

The co-op offers lots of information to help its members prepare for the possibility a hurricane may strike North Florida, including a Hurricane Preparedness Guide. Copies of the 2022 Preparedness Guide are available at ClayElectric.com and the co-op's six district offices.

The Trading Post

Submit your Trading Post ad by sending it to Clay Electric, PO Box 308, Keystone Heights, FL 32656. For more Trading Post ads or to submit your ad online, visit ClayElectric.com.

BAMBOO WINDOW shades, pristine cond, HD, thick, 9.75", \$15 ea. Also 3/26", \$10 ea. Tony or Pam. 386-454-1070 Beames

INVERSION TABLE, good cond, used very little, \$75 obo. 17 jewel silver pocket watch w/ deer engraving on case, floral face, \$100 obo. Collector silver pocket watch w/ duck engraving on case & face w/ chain, \$75 obo. Antique 36" octagonal solid wood table, good cond, orig out of Governor's Mansion, Ga., \$200 obo. BAH by Omega scooter, older model, needs 2 marine batteries, \$350. Many more items. 904-282-6814 Mester

WOODTECH LATHE, like new, \$80. Plant or statue stands, hand-made of various woods, many sizes, \$25-\$60. Small router table, \$15. Custom benches, different sizes, \$25, finished. Silver Springs, in the forest. Please text. 727-946-1627 Reale

'79 LINCOLN Towncar, dk blue w/blue velour interior. Non-smoker, 71,270 mi. \$5,000. 215-460-1057 Fabian

BASS BOAT. Alumacraft Evinrude 40 Hp and hand control Minn-Kota, trailer, Bimini top, depth finder. \$5,500 cash. Don. 352-495-2636 Thomas

CORVETTE ALUMINUM finned valve covers '63-'65, \$200. Corvette steel valve covers '62-'65, \$75. Lv msg. 352-425-1144 Michaux

2005 DODGE 3500 Diesel pickup, 230,000 mi, very nice, full power, 1 owner, \$22,000 offer or trade & cash. Scott. 386-546-5786 Willey

KING MATTRESS, never used, Linen Spa, \$150. My Pillow mattress cover, \$250 obo. Venture Power battery jumper, \$35. Rolling wooden fishing rod rack, \$10, still in box. Central pneumatic portable air tank in box, \$25. 10'x10' EZ Roll pop-up screen room \$60, still in box. Ryobi 16" variable speed scroll saw in box, \$100. 2 electric air compressors, used, still work, \$120 ea. Ladders, 1-12', 1-12' fold up & 5' step ladder, \$100/all. Double Bass Ludwig drum set, S/S concert set 7 cymbals & stands, \$2,500 obo. Middleburg area. Kirk. 904-449-5765 Williamson

OUTBOARD MOTOR Mercury 25HP Tiller control, electric start plus pull start. Runs great, very low hrs, never been in salt water. \$1,500. 352-473-5070 Schroll

8' SLATE BED pool table, great cond. Vinyl cover, pool balls & cues. Buyer responsible for moving. \$1,800. Text 904-400-3505. McHugh

19' WAHOO BOAT & trailer, C Console, 125 Mariner, needs repair, \$2,000. 386-546-6926 Spittle

UWS TOOLBOX, diamond plate, fits Toyota Tacoma pickup, \$75. 352-473-7482 or 904-607-0535 Cole

CEMETERY CRYPT. Palatka Memorial Gardens, Silver Lake Dr. Mausoleum, double space, end to end. Bldg 3 Section 3 Level 5 Space 1 east side + memorialization; \$7,700, value \$10,000. 386-649-9055 White

JAZZI 600 ES Series electric chair. Set up for stroke victim. Seat measures 19.5" w, 18" front to back. Like new, used 3x. Comes w/charger & instruction manual. \$2,500 cash, firm. 904-282-5478 Dellinger

RUGER OLD ARMY. 45 caliber percussion revolver \$800, Barnett crossbow 340 fps. w/scope, very accurate. \$275. Don. 904-264-9436 Swensen

BROWNING SWEET 16 — \$1,000 book value. 1911 45 semi-automatic pistol, \$450. Colt 32 revolver, exc cond, \$450. New 4.5x6 trailer w/loading ramp, never used, \$350. 14' Alumacraft boat w/6 HP Yamaha motor, internal & external gas tanks, foot control trolling motor, 2 bilge pumps, carpeted, padded swivel seats, exc cond, always garage kept, \$3,800. AK47 mint cond, \$800. Mauser rifle, exc cond, \$275. 904-654-7841 or 904-254-3767 Box

PARTS CARS. '84 Chevy 1/2 ton Silverado front fenders & grill (good). '78 Chevy 3/4 ton van. Call Sam, lv msg. 386-538-0504 Enzor

MECHANIC'S CORNWELL vtg tool chest, \$200. Industrial shop stool, vtg drafting chair, adj ht, swivels, \$200. Can send photos via text or email. 386-288-8827 Cistaro

MOTORCYCLE JACK, almost new, 1,500 lb capacity, pd \$140, sell \$100 obo. Cash only in small bills, no lgr than \$20. Call Louis. 386-985-6621 Huber

1946 INTERNATIONAL 50 HP WD9 farm tractor (restore project), \$2,100. 5 HP Predator motor w/chain drive clutch, \$100. Lake City. 386-755-3465 Delbene

STAINLESS STEEL handicamp ramp. (2) 8'x3'; (1) 9'x3'; (1) 9'6"x3'; (1) 5'1"x3'3" platform. Total length 39.7'. \$2,500. Elenamccormick686@gmail.com. 386-866-4014 McCormick

JACK DAVIS trading cards. Funny monsters from 1959. Fine cond, 50 cards. \$200. 352-554-3431 Behnke

STATIONARY BICYCLE, rides very good, old but heavy & sturdy, \$25. 386-288-5005 Johns

2001 D-1500 dbl cab, short bed, 100K, hitch, wired for brakes 5.9h, \$1,400. 2004 Toyota Sienna, great for family or work, 230K, \$2,700. 352-443-2527 McMullen

CUSHIONED SOFA, \$75. Plastic toolbox (truck), \$25. Jacuzzi tub, \$500. Canon printer NIB, \$80. PlayStation 2, no games, \$100. Pioneer DVD player, \$100. 53 DVD movies, \$75/all. Arcade-style dart machine, \$125. Big screen TV Magnavox, \$325. 6 wooden dining room chairs, \$40. 3 bar stools, great cond, cushioned seats. Tina 386-312-8486 Byers

2006 CRAFTSMAN riding mower, 22 HP, 42" deck, \$1,000. 352-468-

2466 Smith

TUXEDO (STAFFORD) complete, worn once. Black jacket, lined yellow, matching yellow tie, pants size 38-30, 2 white long-sleeved shirts (18 & 17.5), 1 pair black suspenders, 1 pair black shoes size 8.5. Bargain - \$50/all! 904-398-4090 Smith

4 CEMETERY PLOTS in Memory Gardens Orange Park. Garden of Christ 1, 2, 3 & 4 up front near the magnolia tree. \$3,000 each plot. Call/text Howard. 904-613-5812 Taylor

NEW IN BOX, factory running boards for a 2015-2022 Chevrolet Colorado. Paid sticker price of \$795. Sell for half price of \$400 OBO! 386-983-4051 Thompson/VINTAGE GUITARS. Silvertone 1448 & 1457. Amp-in-case. Great condition. Play very well. \$600 & \$800 ea. 352-528-5359 Patrick

ATV/GOLF CART/utility trailer, 14' L 5' W 12" sides. HD tailgate. Like new cond: new wiring lights, wheel bearings, paint, tongue jack, wood decking. Single axle (3500#), 15" tires, \$2,400/obo. Kolpin Gold Line, camo 3-pc ATV luggage set. Neoprene mitts, front/rear rack bag. Rear gear bag w/removable chair. HD water repellent exterior. NIB, \$175. Neoprene seat cover for ATV. Cabelas. New, still in package. Mossy Oak BreakUp. Hook and loop fasteners, \$25. Soft Bow Case, Allen, Realtree Camo, 53" L, \$25. Lv msg. 352-316-5079 Burch

96,000+/- SPORTS CARDS. 89,000 baseball, 3,000 football, 2,000 basketball, 750 misc. cards. Some 45+ yrs old. Stored in 9-pocket plastic sleeves & protected in 76 3-ring hardback notebooks & categorized by card company names. Plus 1 complete box of 1990 Upper Deck cards, plus 350 9-pocket plastic card holders. Will trade for good new treadmill or will sell all for \$800. Lv msg for Tom 352-685-2788 Hapner

GENERAC PORTABLE generator, surge watts 6875w 7-gal fuel tank voltage 120/240 amps 45.8/22.9 plus power cord set 20', \$75 value included; also 5-gal fuel tank less than 20 hrs but carburetor needs cleaning to start. \$350. 904-403-3189 Riffel

ELAEAGNUS (silver leaf) plants, 3 gal \$9/ea. min.3. Makes great hedge, fast growing. Sue 352-951-1374 Personett

PREMIUM SINGLE plot, vault, casket & interment at Riverside Memorial Park, Normandy Blvd, Jax Fl. Current value \$11,490. Will sell for \$6,000. Call Dave 904-327-9980 Lutman

2002 F350 dually XLT 7.3L Turbo Diesel w/Banks Power Kit. Slide-in 5th wheel hitch. Leather seats. 108K miles. Needs A/C repair. \$30,000. Lv msg 352-258-6948 Keith

2 BURIAL PLOTS/concrete burial vaults at Alachua Hillcrest Memorial Park 3700 S.E. Hawthorne Rd. 2 for \$5,000. 352-258-6560 Willis

2016 CHRYSLER 300C 4-door sedan, white, perfect condition, no dents, scratches, or defects in interior or exterior, has top safety features, 23,700 miles, \$24,500 obo. 386-755-2105 Phillips

EXTRA LONG twin bed-wooden headboard, frame, mattress, box



Meat and tater hot dish

Ingredients:

- 1 pound ground beef
- 1 onion, chopped
- 1 can, condensed cream of mushroom soup
- ¾ cup sour cream
- 1 can, green beans, drained, liquid reserved, divided
- 1 processed cheese, sliced
- 1 pound frozen bite-sized potato nuggets

Instructions:

Preheat the oven to 375 degrees. Heat a large skillet over medium-high heat. Cook and stir ground beef in the skillet until browned and crumbly, 5 to 7 minutes. Drain grease. Add onion and cook until soft and translucent, about 5 minutes.

Combine condensed soup, sour cream and green bean liquid in a small bowl. Set sauce aside.

Add green beans to the cooked beef and onions; mix to combine and transfer to a casserole dish. Top with sliced cheese and cover with frozen potato nuggets. Pour sauce over top.

Bake in the preheated oven until potatoes are browned and sauce is bubbly, about 1 hour.

CLAY ELECTRIC BOARD OF TRUSTEES

Meets at noon Thursday,
Sept. 22 and Thursday, Oct.
27 in Keystone Heights.

Carl Malphurs - President
Alachua - District 4
Karen Hastings - Vice President
Citra - District 9
Kelley Smith - Secretary
Palatka - District 2
Dewitt Hersey - Treasurer
Starke - District 5
Carl Hagglund - Trustee
Keystone Heights - District 1
Susan Reeves - Trustee
Hawthorne - District 3
Jimmy Wilson - Trustee
Middleburg - District 6
John Whitehead - Trustee
Lake Butler - District 7
Jo Ann Smith - Trustee
Micanopy - District 8

Ricky Davis
General Manager & CEO

EXECUTIVE STAFF

Bryan Gunter
Chief Operations Officer
Chris Bryan
Chief Engineer
Mark Maxwell
Chief Financial Officer
Derick Thomas
Chief Public Relations Officer
Justin Williams
Chief Officer of Corporate Services
and Human Resources
Toby Moss
Chief Information Officer
Cheryl Rogers
Chief Audit Officer

DISTRICT MANAGERS

Troy Adams
Gainesville & Lake City
Derick Thomas
Keystone Heights
Andy Chaff
Orange Park
Derek Hembree
Palatka & Salt Springs

COMMUNICATIONS

Kathy Richardson
Manager of Communications


Clay Electric Cooperative, Inc.
A Touchstone Energy® Cooperative

springs, good cond. \$125. 8-drawer dresser \$100.
(Linens avail.) 352-562-2275 Howard

GOOD 27' MOTORHOME \$10,000. 6 new tires,
new gas pump, brakes, wheel bearings, starter,
full bath; doesn't use oil. Beautiful rolltop desk
\$600. New bunkbed \$200 obo. 352-414-8885
Bringman

SUNSET PARK RV, sleeps 2, has mw, refrigera-
tor/freezer, propane stove, sink, hot/cold water,
propane furnace, a/c, AmFm radio, TV, antenna,
roof vent, awning, 12-volt battery, propane
tank, spare tire, weighs 1080 lbs, smoke alarm,
extinguisher, solar cell hookup, 4 parking
wedges. Used only 3x. \$13,000 firm 386-684-
6928 Blanton

2005 12' ALUMACRAFT boat & trailer w/new
tires & in vg cond, 4.0 motor Ancheer 5 yrs old
that is brand new, small trolling motor, & boat
cushions. Have title and registration. \$1675
negotiable. Call Morris. 904-796-0550 Norman
ECHO GRASS TRIMMER, clean, runs fine, \$70.
Ladies Schwinn bike, exc cond, 26x1.95 tire size,
cost \$135, sell \$60. Marine artifact, old time
script Chris Craft logo on highly varnished lg ma-
hogany plank, \$150. SS kitchen sink double basin
undermount for granite kitchen top, inc drain
baskets, good cond, \$50. Offshore lg game fish
hooks, many 4.5" hooks & 2.5" hooks, like new,
\$20. 3 tassel style deep sea lures, \$8. 24-drawer
organizer, \$6. Clamp-on 110-volt light, \$2. Racor
water separator filter assembly w/fittings for gas
or diesel engines, \$60. Call Ken. 904-602-5098
Moran

1995 FORD F150 4x4, 5.0 automatic transmis-
sion, self-locking hubs. \$15,500. 904-813-3598
Arnold

GAS GRILL, Char-Broil; good cond, \$100;
Masterbuilt Electric Smoker \$100 obo. Call Aaron
386-462-3076 Gregory

10,000 BTU Haier window A/C, \$40. Metal &
plastic chicken waterers & feeders, \$2-\$7 ea. 2'x4'
wire cages, \$8 ea. 4-drawer plastic toolbox, \$5. 1
small live animal trap, \$15. 1 lg live animal trap,
\$@0. 2 plastic 5-gal. gas containers, \$10 ea. 1
6-gal plastic water container, \$7. 904-284-4282
Campbell

LIGHT PINE BEDROOM set made by Leas —
dresser, mirror, nightstand, \$175. Bombay en-
tryway table and mirror, \$50. Basset Mahogany
Queen Headboard \$25. Grey Suede Loveseat,
\$150. All items in very good condition. Lv msg
352-660-2026 Derry

2006 PONTIAC VIBE. Garaged, great condition,
everything works. Sun roof. 224,000 miles.
\$4,000. Larry, 352-283-1126 Henderson

QUEEN SIZE MATTRESS w/pillowtop w/zipper
mattress protector that covers entire mattress,
\$300. Many shirts for lg &/or tall man, \$3 ea.
Email sunrisemorning.dc@gmail.com to view/
purchase items. Colbert

SET OF 6 STD residential window blinds. White,
decent condition, need cleaning. Free if you pick
them up. 813-857-8218 Bledsoe

2 FUZION TOURING tires 225/55R 17" - less than
a thousand miles use, \$125. 2 Fuzion Touring tires
225/55R - 18". Less than a thousand miles use,
\$125. 352-727-1681 Cogar

FRIGIDAIRE PORTABLE air conditioner. Like new
10,000 BTU, used 1x. Model#FFPA1022. Have all
accessories & owner's manual. \$200 cash only.
SHOTGUN 12-GAUGE, SA, JTS M12 AR, like new,
6 5-round & 2 10-round magazines, hard case
& 100 rounds buckshot incl., \$650. Beretta SA
handgun, model U22 NEOS, 22LR, like new, incl. 3
10-round magazines, holster, belt, & 100 rounds

22lr ammo, \$275. 2-Handgun North American
Arms Metal Safe Lock Boxes. Inside 9¼ X 6¼.
Never used, still in orig. boxes. \$20 ea/\$30 both.
Call Rob. 352-475-5090 Harper

BURIAL PLOTS — 2 plots Jax Memory Gardens,
Orange Park. Section 10 Garden of the Good
Shepherd, Unit 23D, sites 1&2. Listed @ \$3,000
ea., asking \$2,500 ea. Donna 352-278-7601
Kerby

MAGIC CHEF 5.8 cu ft freezer, 56"Hx21.5"W,
new, just out of box; cost \$260, sell \$160.
Podocarpus plants in 1-gal containers, \$1 ea.
Good screen plants. Kalanchoe \$1/pot. Fingernail
plants, 5-gal containers, \$5 ea. Crescent City area.
Text preferred. 386-301-0819 Naizby

100+ CW CDs from '80s and '90s. Also some
gospel and Christmas CDs. Take all for \$80. 904-
465-0902 Haynes

KNIFE COLLECTION. Folders & fix blades. Almost
all made in USA. Still have boxes & paperwork for
knives. Knives weren't used or carried. 386-336-
2369 Morris

ELECTRIC HOSPITAL BED, 1.5 yrs old, works
great, \$400 to \$300 I will bring to you & set up for
\$75 if local w/in 40 miles of Gainesville. 352-219-
5920 McKeever

HOG HUNTER delight. 40 acres wetlands w/feral
hogs. Near Auburndale, FL. \$65,000. Text is best.
863-206-5274 Hale

1964 MERCURY MARAUDER 2 door 390 v8,
everything runs and drives, aftermarket AC,
\$5,000. 904-214-4050 Carroll

1990 GMC TRUCK, 350 auto trans, many
new parts, great shape. Don 386-754-4143
Colombaroni

ENERGY EFFICIENT transformer model 36B,
Federal Pacific Catalog #T242T155E; 15KVA@150C
rise 1 MP 4.94%, Primary 208Y/120(X) wt 210
lbs, 60HZ 3-phase. 220C insulation system FH46,
ambient temp 40C max. Electro-static shielded,
\$1,300. 386-666-9348 Wilkins

ROTARY TILLER, Howse model RTC62; 62" w;
PTO & 3-pt hitch ready, \$1,300. Pls lv msg Jake
352-546-1164 Lynch

HUSQVARNA MOWER, have all paperwork, pd
\$1,899 -asking \$1,200 obo. Automatic start push
mower, needs work, \$50. Lv msg 904-429-6015
Takacs

2004 FORD TAURUS, low mileage, cold air, in
excellent condition. \$3500 or best offer. 352-
214-3591 Williams

VINTAGE POWER Tools: Craftsman 10" Drill
Press, 5 spd, ½" Chuck, ½ HP & Stand \$179;
Craftsman 6" Bench Grinder 6 X 3/4 X ½ Wheels,
1/3 HP, ½" Arbor \$169; Black & Sander/Polisher
3/4 HP, \$49. Mike 905-629-4085 Bruno

GMC 1980 1-ton camper van will send pictures
upon request, runs great, \$5,000. Bi-fold grey
couch for van makes into bed with hardware
\$300. Kuryakyn driver back rest with all neces-
sary hardware, \$75. Silver Springs 386-316-7404
Boyd

BEAUTIFUL CONDO for short term rental, Ocean
Gallery in St. Augustine. Overlooks pool & ocean.

2/2. Drew 904-364-7145 Reddish
BEAUTIFUL MOUNTAIN CABIN in Gatlinburg,
TN near Dollywood. 4/4, sleeps 11. Hot tub, Game
room & theater. Doug 352-562-2930 Reddish
HOUSEPLANTS. Call to see what I have left.
352-278-0552 Lawrence

2000 KIA SPORT, \$2,500 as is. 386-983-2911
Aponte

1952 CHEVY 2-DR sedan, Styleline Deluxe, new
paint, rebuilt motor (235), 6 cyl. std shift, new
gages, new interior, 12-volt system. Scooter lift,
mounts in bed of pickup truck. 860-214-9803
Roland

BURIAL PLOTS, 2 in Jacksonville Memory
Gardens, Everlasting Life. Current value \$6,000,
asking \$4,800. 904-233-0660 Lawson

AKC REGISTERED LABRADOR retriever puppies.
2 males 4 females. Strong hunting & field trial
blood line. Looking for competition or hunting
homes. Call for prices. 352-817-4273 Hatcher
LEFT HANDED compound bow. 55-70 # draw
weight & 28-30 in draw length. Has IQ 7 pin site.
Sagittarius quiver. Comes w/trophy hunter pro
release. \$150 obo. Mercy home gym. Universal
home gym. \$250 obo. you move. 904-502-3726
Floyd

UTILITY TRAILER. Made of 2x12 treated wood,
built on truck axle/springs, hitch takes 1 7/8" ball.
2' tall sides & back are removable. Overall, trailer
is approx. 4'x8' & 3.5' tall. \$300 firm. Lake City.
386-965-3231 Gunter

DUAL AXLE flat bed trailer 18'x7', low sides,
ramps, winch, \$3,000. 352-625-1168 Ruolf
1967-72 CHEVY C-10 L&R (short bedside panels)
hood, custom tailgate, all vg cond. Call/lv msg
904-451-9057 Guthrie

DEER STANDS, deer climbers, deer ladders, deer
pipe feeders, prices vary \$30-\$60 ea. Trailer load
of lighter wood, make offer. Lv msg 352-481-
7028 Courtney

3 YO POOL POLE, leaf rake, 40' vacuum hose,
vacuum head, pail & ½ box DE powder, \$30. Lv
msg 904-264-4767 Hartmann

TOW DOLLY, Master Tow, not much use, net
capacity 3000#, \$450. Astor. 912-266-0574 Schilf

Scripture

The fear of the Lord is
the beginning of wisdom:
and the knowledge of the
holy is understanding.
For by me thy days shall
be multiplied, and the
years of thy life shall be
increased.

Proverbs 9:10-11