

# Participate in the electoral process

There's an old political saying, "if you're not at the table, you're on the menu."

This adage is the perfect answer to the question, "why vote?" It's a blunt description of what happens when you don't engage in the political process.

If you don't vote in every election, you're not only missing the opportunity to support a candidate that shares your views and concerns, you're allowing others to chart a course impacting your future. That's why we're encouraging all members to recognize National Voter Registration Day on Sept. 20. Whether you're registering yourself or others to vote, or helping members get organized in our communities, there are many ways to get involved.

Once registered, we encourage you to vote every time there is an election. While local elections may not be as exciting as the high-profile presidential election, they are just as critical. Local elections have a direct impact on your community and on your quality of life.

Like the national level, local elections represent who we are as a community, and more importantly, where we want to go. Whether it's an election for a mayor, sheriff, state representative, school board, or an electric co-op board member, your vision for the community is tied to your vote. Voting also keeps elected officials accountable. Elections are a direct and tangible source of feedback.

For information on Co-ops Vote and to learn about the issues affecting America's electric co-ops, visit <https://vote.coop>.

## FUEL COSTS

Continued from front

General Manager/CEO Ricky Davis said the increase in fuel and commodity prices are projected to increase electric generation costs more than \$45 million for 2022. As a result, Clay Electric has been forced to raise its rates an unprecedented five times in less than a year.

"As soon as prices to generate power go down, your cooperative will lower the PCA," Davis said. "We work hard to maintain our costs and provide affordable electricity, but these large fuel increases to generate power make this rate change unavoidable."

The PCA is a separate line item on each Clay Electric statement, which reflects the increases/decreases in the co-op's cost of power. The cost of wholesale power is more than 70 percent of Clay's total expenses, so it's critical all wholesale power costs are recovered in its retail sales.

When the cost of power is greater than the amount included in the base rate, the PCA is a charge. When the cost is less, it's a credit.

As a not-for-profit cooperative, Clay Electric members receive power at cost. At the end of each year when it's determined how much revenue exceeds total expenses, the difference is assigned to members as Capital Credits based on the amount each member was billed for electricity during the year.

## Confused about amount due on bill? Look at usage graph

If you have questions about why your bill is higher, the usage graph on the front is the place to look. It shows your billed energy usage relative to the temperature outside, as well as historical energy usage data so you can compare to the previous month or year. You will also see if your current statement's billing period has more days than the previous month, which would cause your balance to be higher.

The Clay Electric Cooperative, Inc. \_\_\_\_\_

# Power Line

September 2022

## Rates rising again due to fuel costs

Due to the natural gas market still being in a state of crisis, Clay Electric Cooperative has no choice but to implement another rate increase. Beginning with September billing cycles, members using the industry household average of 1,000 kWh of power will pay \$139.90, a \$5 increase.

The higher cost will be reflected in the Power Cost Adjustment (PCA) on members' power bills. The additional amount each member pays each month will vary based on how much electricity is used.

The PCA is increasing as a result of higher costs to generate power, making electricity the co-op purchases from its wholesale power provider, Seminole Electric, more expensive. Current and forecast natural gas prices are quadruple what they were in 2020, and roughly triple from 2021.

While prices at the pump are beginning to ease, natural gas is not to be confused with gasoline, which is used to power vehicles. Crude oil is used to manufacture gasoline and diesel. Natural gas is the fuel used to generate most of the electricity in Florida, and it's a sizable part of the generation mix for Seminole Electric.

Continued on back panel



Clay Electric Cooperative was rated by our customers

**#1 in Customer Satisfaction  
with Residential Electric Service  
Among Cooperatives**

For J.D. Power 2021 award information, visit [jdpower.com/awards](http://jdpower.com/awards)

## 27 students awarded scholarships

Clay Electric has awarded \$2,000 scholarships to 27 high school seniors (Class of 2022) whose primary residences are served by the co-op.

The recipients of the scholarships were determined by an outside panel of judges based on academic achievements, an essay, community and school activities, and letters of recommendation. More than 170 scholarship applications were received.

The scholarship recipients (pictured if photo was provided) are: **Talia Aguglia** (Clay High School); **Nicole Andersen** (Ridgeview High School); **Julia Anderson** (Palatka High School); **Joseph Antonacci** (Oakleaf High School); **Harper Archambault** (Baker County High School); **Celina Bastedo** (Wiregrass Ranch High School); **Gavin Breman** (Santa Fe High School); **Leila Cooke** (Eastside High School); **Bryce Couey** (Keystone Heights Junior/Senior High School); **Stanley**

**Walker Cowherd IV** (St. Johns Country Day School); **Abigail Eckhardt** (Gainesville High School); **Julio Garcia-Martinez** (Douglas Anderson School of the Arts); **Karen Kelly** (T. Dewitt Taylor Middle-High School); **Michael Lavdas** (Vanguard High School); **Karuna Mayi Pourchot Leslie** (P.K. Yonge Developmental Research School); **Jack Lewandowski** (Q. I. Roberts Junior/Senior High School); **Blake Livesay** (St. Johns Classical Academy); **Zoey Nettles** (Belmont Academy Charter School); **Gracie Peebles** (North Marion High School); **Manda Lyn Perry** (Fort White High School); **Alaycia Rowe** (Williston Middle High School); **Kelsey Sherman** (Columbia High School); **Joshua Summerhill** (home/virtual school); **Brooke E. Swenson** (Middleburg High School); **Elijah Tillema** (Fleming Island High School); **Ciara Woodall** (Union County High School); and **Jeffrey Xue** (F.W. Buchholz High School).



Antonacci



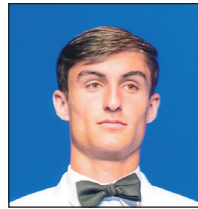
Archambault



Breman



Cooke



Cowherd IV



Garcia-Martinez



Kelly



Lavdas



Leslie



Lewandowski



Livesay



Nettles



Peebles



Perry



Rowe



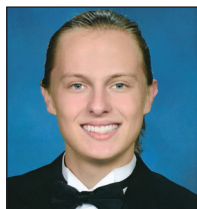
Sherman



Summerhill



Swenson



Tillema



Woodall



Xue

Power Line is an informational publication of Clay Electric Cooperative, Inc. It is distributed monthly with members' statements. If you have questions or comments about Power Line, write Justin Caudell at P.O. Box 308, Keystone Heights, FL 32656; or email: [Jcaudell@clayelectric.com](mailto:Jcaudell@clayelectric.com). Clay Electric Cooperative's Board of Trustees will meet at noon Thursday, Sept. 22 and Thursday, Oct. 27 in Keystone Heights.